

## Product Description

The Alume C1D1 is an explosion proof emergency edge lit exit sign designed for hazardous locations where flammable gases, vapors, or combustible dust may be present. Built to meet strict UL hazardous location standards, this fixture provides reliable red EXIT indication and long-duration emergency illumination to ensure safe evacuation during power outages.

> Quick Ship - In Stock, Ready to Ship

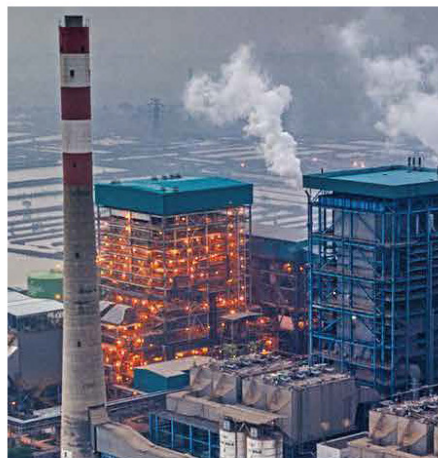
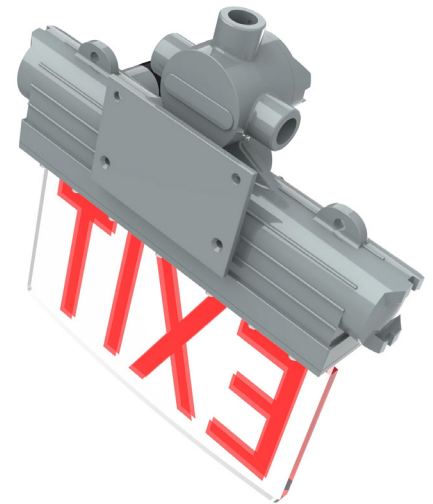
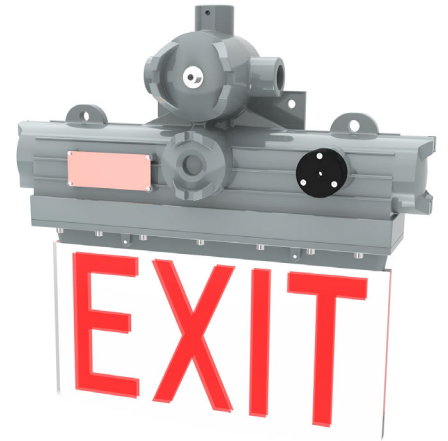
Project:		Type:
Location:		
Prepared By:		Date:
Comments:		

## Performance Summary

- Energy-efficient Philips Lumileds SMD LEDs
- In stock and ships from several U.S. locations for quick delivery
- Better visibility than HID or fluorescent
- Patented design with high quality components, excellent choice for retrofitting
- Listed for hazardous locations per UL844 for Class 1, Div 1, Groups C, D
- Heavy duty and high impact resistance
- Provided with 3/4" NPT or M25 conduit hubs
- Solid State with high-shock and vibration resistance - 3G vibration tested
- Light weight and compact structure
- Integrated junction box for driver with emergency backup
- Low energy consumption
- Three hour emergency operation
- When normal power is restored, the unit automatically switches back to main power
- Exit display has dual arrow indicators and red exit light ettering
- Viewing is double sided
- Stainless-steel exposed fasteners with high corrosion resistance
- Sealed unit. Battery not replaceable. Replace entire exit sign unit when necessary
- Housing is A356T6 aluminum with baked-on gray epoxy finish
- Streamlined housing, no rough edges or scraping, with SUS316 stainless steel hardware
- LED array manufactured using a state-of-the-art SMT machine
- Tempered glass sign lens
- One piece silicone gasket design
- Operating temperature: 0 to 40 degrees celsius
- 100,000 hour LED life - IP66 rated for outdoor locations
- Certifications: ABS, UL HazLoc, cULus
- 10 year limited warranty

## Alume C1D1 Exit Sign

Class 1, Division 1 Hazardous Explosion Proof  
LED Edge Lit Luminaire



Vivid Leds, Inc.  
PO BOX 9  
Sellersburg, IN 47172  
330-809-0431  
www.vividleds.us

Dimensions, specifications, and product pictures are subject to change without notice.

The product on this page is a manufactured to order, non-stocking item. This product cannot be returned for refund or credit.

F30

Revised 4.25.26

## Applications:

### Oil and Gas industry

- All petroleum production and refining
- Petroleum loading and transportation
- Petroleum storage and retail
- LNG industry
- All mining operations and service

### Chemical industry

- All types of paint facilities
- Chemical production and storage

### Ocean, marine and aerospace field

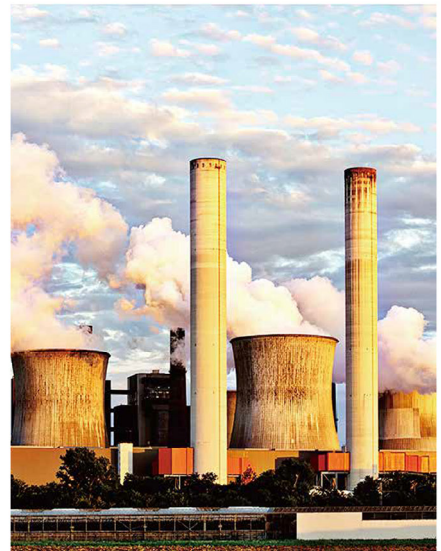
- Ocean platform operation facilities and structure
- Aerospace clean room and production
- Ocean vessel operations

### Metal treatment

- Steel and aluminum factories
- Pumping stations in any environment
- Metal smelting, foundry and fabrication

### Food and alcohol industry

- Flour and fine particle production and storage
- Food and distilling production
- Alcohol industry



## Explosion Protection:

### UL844

- Class I, Division 1, Groups C, D
- Class I, Division 2, Groups A, B, C, D
- Class II, Division 1, Groups E, F, G
- Class II, Division 2, Groups F, G
- Class III

### Marine

- UL 1598, UL1598A
- ABS

## Models:

- WDEXITC1D1 - 5W - 16.8" (L) x 4.9" (W) x 17.2" (H) - 23 Lbs

Ordering Information:					Part Number:
Ordering Example: WDEXITC1D1-50-PT-V27-PM					
Family	CCT	Finish	Voltage	Beam Angle	Mounting
WDEXITC1D1	50 - 5000K	PT - Platinum	V27 - 100-277V	T5 - 180 Degrees	PM - Pendant Mount WM - Wall Mount PC - Pendant Chain



Vivid Leds, Inc.  
PO BOX 9  
Sellersburg, IN 47172  
330-809-0431  
www.vividleds.us

Dimensions, specifications, and product pictures are subject to change without notice.

**F30**