

## Product Description

The Alume HB C1D2 Explosion Proof High Bay uses an industrial grade die-cast aluminum housing and anti-corrosion powdercoat in a IP66 design, which features high-performance illumination that lasts up to 100,000 hours. The system includes 6KV surge protection, a high efficacy and low decay 700 MA LED chip, and shock and vibration resistant tempered glass lens. Replaces MH/HPS in a retrofit environment.

> Quick Ship - In Stock, Ready to Ship

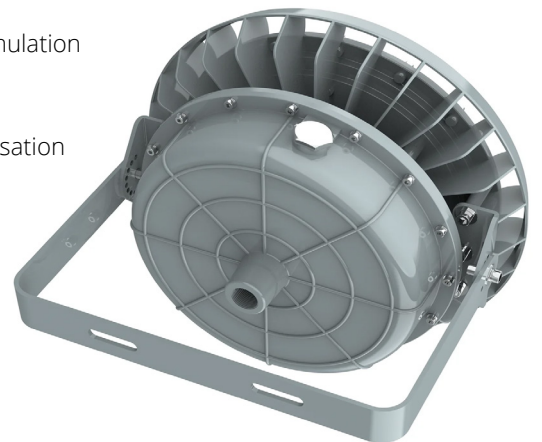
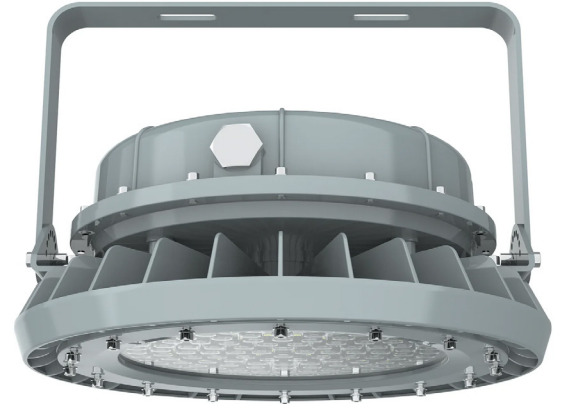
Project:		Type:
Location:		
Prepared By:		Date:
Comments:		

## Performance Summary

- Energy-efficient Bridgelux SMD LEDs with high efficacy >130 Lm/W
- In stock and ships from several U.S. locations for quick delivery
- Better visibility than HID with crisp, 5000K anti-glare, white light
- Patented design with high quality components, excellent choice for retrofiting
- Listed for hazardous locations for Class 1, Div 2, Groups A, B, C, D
- Listed for Class II, Division 2, Groups F and G; Class III hazardous environment
- Heavy duty and high impact resistance
- Solid State with IK09 high-shock and vibration resistance - 3G vibration tested
- Patented heat dissipation design for optimum efficiency - T4 temperature rating
- National listing lab tested to IES standards with Type V 120 degree optic
- High lumen maintenance exceeds DOE requirements
- 1/9th LED micro color binning enables tight color control
- High transmittance tempered glass lens over the LEDs
- Mounting with adjustable yoke bracket or NPT conduit with cable entry
- Heavy die-cast aluminum alloy housing with gray powdercoat finish
- Surface powdercoat is salt, chemical, and dust resistant
- Housing is sandblasted and polished for corrosion resistance, rust free and fadeless
- Streamlined housing, no rough edges or scraping, with SUS316 stainless steel hardware
- CNC machined LED boards are flatness controlled to 0.1mm to speed up heat dissipation
- Replaceable aluminum LED boards with copper tracings for best thermal management
- LED array manufactured using a state-of-the-art SMT machine
- Copper condensation valve balances the air pressure and prevents water vapor accumulation
- Cooling fins are added to the heatsink for low temperature and higher efficiency
- Shock and vibration resistant tempered glass lens with 95% light transmittance
- Patented double waterproofing design on the radiator and module to prevent condensation
- Advanced constant current Meanwell HLG power supply with 6kV surge protection
- Fast turn on with no warm up or cold start issues
- Excellent optical presentation for multiple applications
- Unmatched thermal management and proven lumen maintenance ratio
- Improved illumination performance and excellent optics control
- High power factor with IC controlled LED circuits and low THD driver
- Low junction temperature for long life and low lumen depreciation
- Instant illumination and restrike with no warm up or cold start issues
- Contains no mercury, lead, infrared or UV radiation and cool to the touch
- 0-10V dimmable driver standard
- Commercial CRI: RA>72, enhances original colors
- Operating temperature: -40 to 50 degrees celsius
- 100,000 hour LED life - IP66 rated for outdoor locations
- Certifications: CE, RoHS, FCC, ETL, UL, cULus, NSF, DLC
- 10 year limited warranty

## Alume HB C1D2

Class 1, Division 2 Explosion Proof High Bay  
**LED Dimmable Luminaire**



Vivid Leds, Inc.  
PO BOX 9  
Sellersburg, IN 47172  
330-809-0431  
www.vividleds.us

Dimensions, specifications, and product pictures are subject to change without notice.

## Applications:

### Oil and Gas industry

- All petroleum production and refining
- Petroleum loading and transportation
- Petroleum storage and retail
- LNG industry
- All mining operations and service

### Chemical industry

- All types of paint facilities
- Chemical production and storage

### Ocean, marine and aerospace field

- Ocean platform operation facilities and structure
- Aerospace clean room and production
- Ocean vessel operations

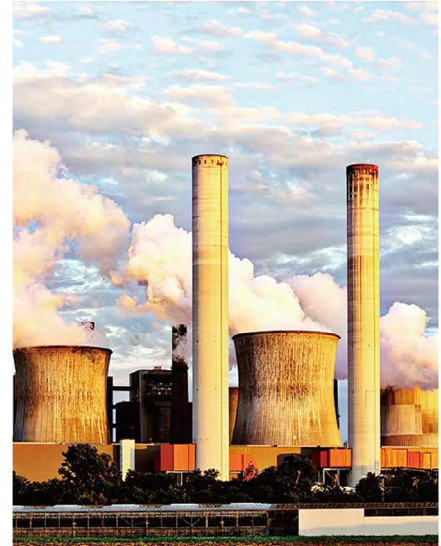
### Metal treatment

- Steel and aluminum factories
- Pumping stations in any environment
- Metal smelting, foundry and fabrication

### Food and alcohol industry

- Food and distilling production
- Alcohol industry

Other high humidity, high dust, high temperature, vapor locations



## Models:

- WDLSEX150 - 150W - 19,500 Lm - 1.25A - 14.6" (D) x 7.9" (H) - 22 Lbs - 120 Degrees
- WDLCEB300 - 300W - 39,000 Lm - 2.5A - 14.8" (D) x 10.5" (H) - 28 Lbs - 180 Degrees

## Ordering Information:

Part Number:

Ordering Example: WDLSEX150-50-T5-V27-GR

Family	CCT	Optic	Voltage	Finish	Mount
WDLSEX150 WDLCEB300	50 - 5000K	T51 - 120 Degrees T52 - 180 Degrees	V27 - 100-277V	GR - Gray	YK - Yoke Bracket PM - 3/4" NPT Conduit



Vivid Leds, Inc.  
PO BOX 9  
Sellersburg, IN 47172  
330-809-0431  
www.vividleds.us

Dimensions, specifications, and product pictures are subject to change without notice.

The product on this page is a manufactured to order, non-stocking item. This product cannot be returned for refund or credit.

F17

Revised 4.24.26