

Product Description

The Twilight Z9 offers a basic solution that applies to even the most difficult applications. With a IK07 impact resistant grade aluminum alloy housing, tempered glass cover, IP66 waterproof rating, a variety of CCT's and beam angles, and adjustable mounting brackets, the Twilight Z9 shines above the rest. Applications include sign lighting, building illumination, cove lighting, and architectural features.

> Special Order - Minimum 30 Day Lead Time

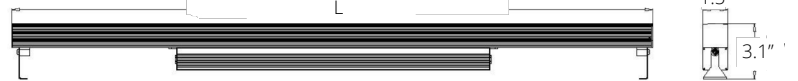
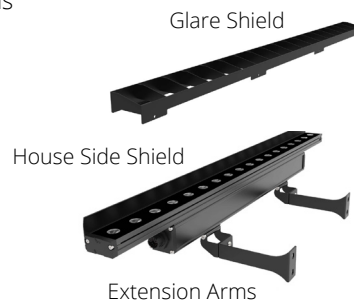
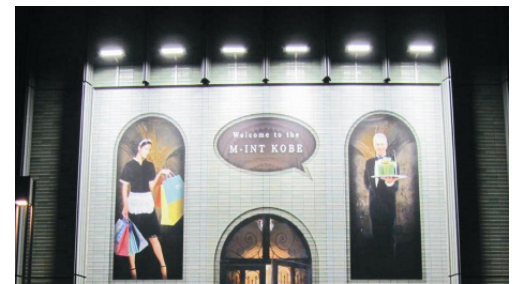
Project:		Type:
Location:		
Prepared By:		Date:
Comments:		

Performance Summary

- Philips OSRAM LEDs with efficacy >45 Lm/W color and >90 Lm/W white
- Easy installation with 165 degree graduated rotating mounting brackets
- Incredible light throw with 5 degree optic lens up to 325 feet
- IK07 impact resistant grade aluminum alloy housing with low heat generation
- Streamlined housing, no rough edges or scraping, with 304 stainless steel hardware
- Corrosion resistant and durable aviation grade aluminum housing
- Durable tempered glass cover with water resistant protection
- Precise optic over each LED reduces glare and enhances uniformity
- 1/9th LED micro color binning enables tight color control
- Hot color targeting ensures color is within ANSI bin compliance
- CNC machined LED boards are flatness controlled to 0.1mm
- High quality and efficient thermal heatsinks for long life
- 5' power cable whip, H05RN-F, 3*0.75mm², Φ6.8
- 1.5' power cable and control cable in and out with linkable option
- High power factor with IC controlled LED circuits and low THD driver
- Low junction temperature for long life and low lumen depreciation
- Instant illumination and restrike with no warm up or cold start issues
- Contains no mercury, lead, infrared or UV radiation and cool to the touch
- Commercial CRI: RA>70, up to CRI: RA>90 optional
- Operating temperature: -20 to 45 degrees celsius
- IP66 rated, applicable for indoor or outdoor applications
- 100,000 hour LED life
- Certifications: CE, RoHS, ETL
- 1 Year Warranty - 3 Year Optional

TWILIGHT Z9

Static Color, Static White
LED Wash, Stripe or Graze



Models:

- WVDZ99S: 9 LEDs - 9W - 1080 Lm - 12.4" (L) - 1.5 Lbs
- WVDZ912S: 9 LEDs - 12W - 1620 Lm - 13.8" (L) - 2.6 Lbs
- WVDZ918S: 18 LEDs - 18W - 2160 Lm - 24.2" (L) - 2.2 Lbs
- WVDZ933S: 18 LEDs - 33W - 3150 Lm - 24.4" (L) - 4.9 Lbs**
- WVDZ936S: 36 LEDs - 36W - 4320 Lm - 48" (L) - 3.8 Lbs
- WVDZ965S: 36 LEDs - 65W - 5850 Lm - 48" (L) - 8.4 Lbs

Ordering Information:

*Adder Applies				Part Number:	Ordering Example: WVDZ99S-N-10-ND-BK-UNV1	
Family	CCT	Optic	Dimming*	Finish	Voltage	Accessories*
WVDZ99S WVDZ912S WVDZ918S WVDZ933S WVDZ936S WVDZ965S	O - Static White - 2200K W - Static White - 3000K N - Static White - 4000K C - Static White - 6000K R - Static Red - 625nm G - Static Green - 525nm B - Static Blue - 460nm Y - Static Yellow/Amber - 590nm	S1 - 5 Degree* S2 - 10 Degree S3 - 20 Degree S4 - 30 Degree S5 - 40 Degree S6 - 60 Degree A1 - 10x20 Degree A2 - 15x55 Degree A3 - 15x40 Degree A4 - 20x40 Degree	ND - Non Dim DMX - DMX RDM - RDM DALI - DALI DM - 0-10V	BK - Black CS - Custom*	UNV1 - 100-277V UNV2 - 100-240V** 24 - 24 VDC	LK - Linkable*** GP - Grounded Plug EA6 - 6" Ext. Arm Pair EA12 - 12" Ext. Arm Pair EA18 - 18" Ext. Arm Pair CRI80 - 80 CRI CRI90 - 90 CRI GS - Glare Shield HSS - House Side Shield PC - Linkable Power/Control Extension Cable Per Foot



Vivid Leds, Inc.
PO BOX 9
Sellersburg, IN 47172
330-809-0431
www.vividleds.us

Dimensions, specifications, and product pictures are subject to change without notice.

***See max run length in installation instructions

The product on this page is a manufactured to order, non-stocking item. This product cannot be returned for refund or credit.