

Product Description

Alume Half Moon LED wall pack is designed to replace traditional HID wall packs using well sealed die-cast aluminum housings and an impact resistant PC lens. The Alume is easy to install and includes 0-10V dimming, color tuning, and a photocell. Replace your MH / HPS wall packs up to 400W with the latest technology in LED lighting.

> Quick Ship - In Stock, Ready to Ship

| | | |
|--------------|--|-------|
| Project: | | Type: |
| Location: | | |
| Prepared By: | | Date: |
| Comments: | | |

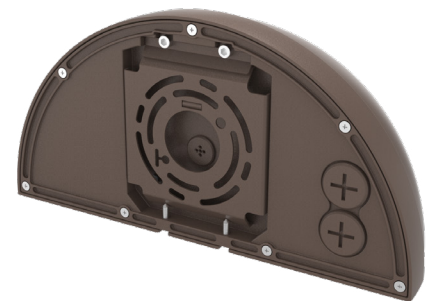
Performance Summary

- Energy-efficient Philips Lumileds SMD LEDs with high efficacy >135 Lm/W
- In stock and ships from several U.S. locations for quick delivery
- Better visibility than HID with crisp, white light
- Open frame design with a Type V 120 degree IES beam angle
- Easy access to control switch for a range of CCT's from 3000K to 5000K
- Wattage selectable switch allows for a wide range of lumen outputs
- Photocell switch to the controls off and on
- Patented design with high quality components, excellent choice for retrofitting
- National listing lab tested to IES standard
- High lumen maintenance exceeds DOE requirements
- Solid State with high-shock and vibration resistance
- Aviation grade aluminum alloy die cast housing with bronze powdercoat finish
- Chromate conversion coating for long lasting appearance
- Streamlined housing, no rough edges or scraping, with 304 stainless steel hardware
- Housing and driver compartment is one piece to maximize heat dissipation
- Wall mount with quick mount back plate for easy installation
- 1/9th LED micro color binning enables tight color control
- Hot color targeting ensures color is within ANSI bin compliance
- Well distributed light using a patented reflecting system
- Impact resistant PC lens over the LEDs with rubber grommet
- Advanced, serviceable, constant current Sosen driver with 0-10V dimming
- High power factor with IC controlled LED circuits and low THD driver
- Low junction temperature for long life and low lumen depreciation
- Instant illumination and restrike with no warm up or cold start issues
- Contains no mercury, lead, infrared or UV radiation and cool to the touch
- Commercial CRI: RA>72
- Operating temperature: -30 to 45 degrees celsius
- 100,000 hour LED life of maintenance-free, safe operation
- IP65 rated for indoor or outdoor locations
- Certifications: CE, RoHS, UL, cUL, DLC
- 10 year limited warranty

Alume Half Moon

Wattage Selectable & Color Tunable Slim Wall Pack

LED Dimmable Luminaire



Models:

- VDWPHM80: 48W/64W/80W - 10800 Lm - 3000K/4000K/5000K - 13" (W) x 6.9" (H) x 6.5" (D)

| Ordering Information: | | | | Part Number: | | | |
|--|--------------------|---------------|----------------|--------------|----------------|-----------------|----------------|
| Ordering Example: VDWPHM80-CT-S5-UNV-BZ-DM-WM-PC | | | | | | | |
| Family | CCT | Optic | Voltage | Finish | Dimming | Mounting | Accessories |
| VDWPHM80 | CT - Color Tunable | S3 - Type III | UNV - 100-347V | BZ - Bronze | DM - 0-10V Dim | WM - Wall Mount | PC - Photocell |



Vivid Leds, Inc.
PO BOX 9
Sellersburg, IN 47172
sales@vividleds.us
www.vividleds.us

Dimensions, specifications, and product pictures are subject to change without notice.

Dimensional pictures are for reference only. They do not represent the actual fixture's shop drawing or design.

The product on this page is a manufactured to order, non-stocking item. This product cannot be returned for refund or credit.

D9

Revised 6.4.25