

Product Description

A new high mast luminaire suitable for outdoor squares, intersections, urban roundabouts, ports, railway stations, and integrated outdoor stadiums. The EXITE is designed with all-crystals, which have high transmittance up to 153,600 lumens. The fully prismatic glass optics produce an overlapping light pattern resulting in high application efficacy, providing excellent uniformity and glare control, resulting in excellent visibility within the space.

> Special Order - Minimum 30 Day Lead Time

Project:		Type:
Location:		
Prepared By:		Date:
Comments:		

Performance Summary

- Bridgelux 3535 LEDs with high efficacy up to 140 Lm/W
- Standard design with modern components, excellent choice for retrofitting
- Low profile, 3G vibration rated compact design minimizes wind loads
- Patented heat dissipation design for optimum efficiency
- National listing lab tested with multiple Type V distributions
- High lumen maintenance exceeds DOE requirements
- Tool-free switch buckle door hinge allows easy access
- Designed for harsh temperature and high humidity
- Solid state with high shock and vibration resistance
- Instant on and off without delay or re-strike
- Hexagon LED modules create directional and universal polarized light
- PMMA prismatic all-crystals clear lens for durability and clarity
- Photometric optic built over each LED for enhanced light distribution
- Overlapping light pattern provides excellent uniformity and glare control
- Industrial cold forged die cast fixture housing
- Heat dissipation design of the radiator shell accelerates the convection heat
- High thermal conductivity aluminum surface treatment finish with stainless hardware
- Excellent resistance to corrosion, UV degradation and abrasion
- Pole mounting with 0-350 degree horizontal housing rotation and 8 degrees vertical
- Includes integrated gasketed NEMA twistlock receptacle
- Optional intelligent photocell control system reduces energy
- High CRI - RA>70 enhances original colors
- 1/9th micro color binning enables tight color control
- Hot color targeting ensures color is within ANSI bin compliance
- No lead, mercury, UV or IR radiation
- 0-10V dimmable class 1 Inventronics driver with integrated 10kV surge protection
- Short circuit, over current, over voltage, over temp protection
- Operating temperature: -40 to 45 degrees celsius
- IP66 rated for outdoor applications
- Over 100,000 hour LED life (L70B50 @ 77 degrees F)
- Certifications: CE, CB, ERP, RoHS, IK08, UL, cULus, DLC
- 10 year limited warranty

EXITE HIGH MAST

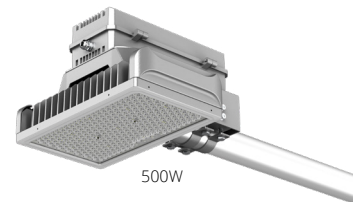
LED Dimmable Luminaire



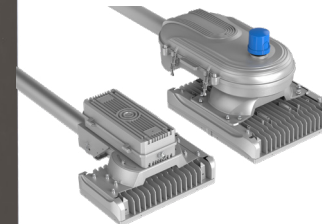
Shown in Bronze



630W / 960W



500W



Models:

- VVDHFLG2500 - 500W - 70,000 Lm - 17" (L) x 16.9" (W) x 10" (H) - 38 Lbs - EPA 2.36 (Front), EPA 1.43 (Side)
- VVDHFLG2630 - 630W - 88,200 Lm - 28.8" (L) x 17.2" (W) x 11.2" (H) - 73 Lbs - EPA 4.11 (Front), EPA 2.66 (Side)
- VVDHFLG2960 - 960W - 134,400 Lm - 28.8" (L) x 17.2" (W) x 11.2" (H) - 73 Lbs - EPA 4.11 (Front), EPA 2.66 (Side)

Ordering Information:				Part Number:			
*Adder Applies				Ordering Example: VVDHFLG2500-50-T51-UNV1-SG-ND-PL			
Family	CCT	Optic	Voltage	Finish	Dimming	Mounting	Accessories*
VVDHFLG2500 VVDHFLG2630 VVDHFLG2960	30 - 3000K 40 - 4000K 50 - 5000K 57 - 5700K 65 - 6500K	T51 - 15 Degrees T52 - 30 Degrees T53 - 60 Degrees T54 - 90 Degrees CS - Custom*	UNV1 -100-277V UNV2 - 200-480V*	SG - Silver Gray BZ - Bronze* BK - Black* CS - Custom*	ND - No Dim D1 - 0-10V	PL - Pole entry for 42MM or 60MM	PC - NEMA Photocell SC - Shorting Cap



Vivid Leds, Inc.
PO BOX 9
Sellersburg, IN 47172
330-809-0431
www.vividleds.us

Dimensions, specifications, and product pictures are subject to change without notice.

A2