

Product Description

Uniform light distribution, excellent LED lumen maintenance, high efficiency, low cost, and stylish design ensures the Array Slim is a popular choice. The fixture also on-site dimmable output and CCT settings, allowing the contractor to set the lumen value and CCT of the fixture at the installation site to a level that is perfectly suitable for their needs. Emergency egress battery and light control are optional, which is an ideal choice to meet any daily wall-mounted lighting applications.

> Quick Ship - In Stock, Ready to Ship

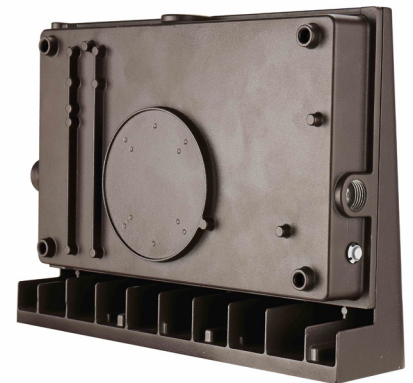
Project:		Type:
Location:		
Prepared By:		Date:
Comments:		

Performance Summary

- Philips Lumileds 2835 LEDs with high efficacy >140 Lm/W
- USA assembled product with quick warranty support
- In stock and ships from several U.S. locations for quick delivery
- Designed with precise tolerances for manufacturing considerations
- Modern design with modern components, excellent choice for retrofitting
- Low profile, 3G vibration rated compact design prescribed by ANSI C136.31
- National listing lab tested to IES standards with Type IV distribution
- High lumen maintenance exceeds DOE requirements
- Solid State with high-shock and vibration resistance
- Rugged two-piece A360 die-cast housing with integral heat sink
- Housing is completely sealed against moisture and environmental contaminants
- 4" and 5" Junction box or 1/2" conduit mounting methods can be used
- Architectural polyester bronze powdercoat finish
- Chromate conversion coating for long lasting appearance
- Rust resistant stainless steel hardware with durable nickel-plating
- Emergency backup driver optional with 90 minutes of power
- Optional Integrated photocell can be switched on/off on the fixture
- Aluminum LED boards with copper tracings for best thermal management
- LED array manufactured using a state-of-the-art SMT machine
- 1/9th micro color binning enables tight color control
- Hot color targeting ensures color is within ANSI bin compliance
- Light engine is color selectable from 3000K, 4000K, and 5000K configurations
- Scalable lumen package adjustments from 100%, 80%, 60%, and 40%
- Photometric optic built over each LED for enhanced light distribution
- Optics are precisely designed to shape the distribution, maximizing efficiency
- Anti-UV prismatic translucent lens is designed to shape the light distribution
- High CRI - RA>80 enhances original colors
- Contains no mercury, lead, infrared or UV radiation and cool to the touch
- Operating temperature: -50 to 104 degrees F (-10 to 40 degrees C)
- 100,000 hour LED life based on LM-80 results and TM-21 calculation
- Certifications: CE, RoHS, UL, cUL, DLC - IP65 outdoor rated
- 10 year limited warranty

ARRAY SLIM

Wattage & CCT Selectable Full Cutoff Wall Pack
LED Dimmable Luminaire



Models:

- VDWDP1538: 17W/23W/31W/38W - 5,690 Lm - 6.1" (H) x 13.1" (W) x 3.8" (D)
- VDWDP1565: 23W/35W/50W/65W - 9,816 Lm - 6.1" (H) x 13.1" (W) x 3.8" (D)
- VDWDP1510: 43W/62W/84W/100W - 14,950 Lm - 6.1" (H) x 13.2" (W) x 5" (D)

Ordering Information:				Part Number:		
*Adder Applies				Ordering Example: VDWDP1345-CT-T4-V27-BZ-DM		
Family	CCT	Optic	Voltage	Finish	Dimming	Accessories*
VDWDP1538 VDWDP1565 VDWDP1510	CT - Color Selectable	T4 - Type IV	V27 - 120-277V	BZ - Bronze	ND - Non-Dim DM - 0-10V Dim	PC - Integrated Switchable Photocell EM - Emergency Battery Backup, 90 Minutes



Vivid Leds, Inc.
PO BOX 9
Sellersburg, IN 47172
330-809-0431
www.vividleds.us

Dimensions, specifications, and product pictures are subject to change without notice.

The product on this page is a manufactured to order, non-stocking item. This product cannot be returned for refund or credit.

D8

Revised 1.12.25