

Product Description

With a high performance heat sink, exceptional lumen maintenance, and a rock solid housing, the Exite Elite will last for many years to come. With a variety of color temperatures and optics, this luminaire can be used in arenas, gymnasiums, airport runways, high mast, shipping ports, or general flood lighting.

> Special Order - Minimum 30 Day Lead Time

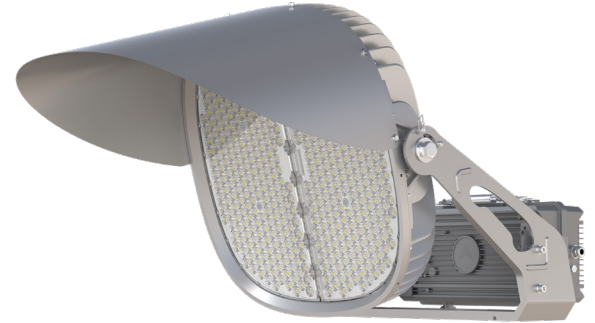
Project:		Type:
Location:		
Prepared By:		Date:
Comments:		

Performance Summary

- Philips Lumileds Luxeon LEDs with high efficacy up to 145 Lm/W
- National listing lab tested with multiple Type V distributions
- PMMA shatterproof clear lens cover for durability and clarity
- Unique micro optic over each LED reduces glare and enhances uniformity
- Solid state with high shock and vibration resistance
- Instant on and off without delay or re-strike
- Industrial cold forged 1070 pure aluminum anodized fixture housing
- Smooth electrophoresis surface treatment finish with stainless hardware
- Excellent resistance to corrosion, UV degradation and abrasion
- Stainless steel hardware to ensure long life
- Heavy duty adjustable surface mount yoke bracket
- Angle indicators allow mounting adjustment in increments
- Optional laser guide with bracket for precise aiming is easy to install and remove
- Thermal management by a seamless link of heatsink vents
- Ultra low EMI noise generation eliminates electrical interference
- Integrated 10KV line-to-ground and line-to-line surge protection wired and included
- Optional aluminum visor dramatically reduces glare and spill
- 5' attached power cord whip and 4' dimming cable for quick and easy installation
- High CRI - RA>70 enhances original colors, 80 and 90 CRI optional
- 1/9th micro color binning enables tight color control
- Hot color targeting ensures color is within ANSI bin compliance
- No lead, mercury, UV or IR radiation
- Integrated Meanwell driver features short circuit, over current, over voltage & temp protection
- Operating temperature: -40 to 50 degrees celsius
- IP66 washdown rated for indoor or outdoor applications
- 100,000 hour LED life (L70B50@25C)
- Certifications: CE, RoHS, ENEC, SAA, FCC, K08, UL, DLC
- 10 year limited warranty

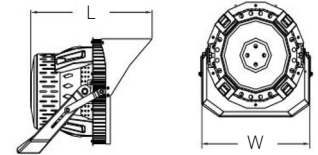
EXITE ELITE

Intense Output For Multiple Applications
LED Dimmable Luminaire



Models:

- WDSP91000 - 1000W - 145,000 Lm - 62 Lbs - 37.3" (L) x 22.7" (W) - EPA 2.9
- WDSP91200 - 1200W - 174,000 Lm - 62 Lbs - 37.3" (L) x 22.7" (W) - EPA 2.9
- WDSP91300 - 1300W - 195,000 Lm - 62 Lbs - 37.3" (L) x 22.7" (W) - EPA 2.9



Ordering Information:

Part Number:

*Adder Applies

Ordering Example: WDSP91000-50-T51-UNV-GR-ND

Family	CCT	Optic	Voltage	Finish	Dimming	Accessories*
WDSP91000 WDSP91200 WDSP91300	30 - 3000K 40 - 4000K 50 - 5000K 57 - 5700K 65 - 6500K	T50 - Type V 11 Degree* T51 - Type V 15 Degree* T52 - Type V 20 Degree T53 - Type V 40 Degree T54 - Type V 60 Degree	UNV - 200-480V	GR - Gray CS - Custom*	ND - No Dim D1 - 0-10V Dim PWM - PWM* DLI - Dali* DMX - DMX* SYN - Synapse*	VS - Visor LG - Integrated Laser Guide For Precise Aiming SC - 10' Safety Cable EB - External Ballast Box For Remote Pole Mounting LVE - Low Voltage Power Cord Extension with IP65 Connector For External Ballast Box (Max 19')



Vivid Leds, Inc.
PO BOX 9
Sellersburg, IN 47172
330-809-0431
www.vividleds.us

Dimensions, specifications, and product pictures are subject to change without notice.

Integrated Laser Guide Accessory



B16

The product on this page is a manufactured to order, non-stocking item. This product cannot be returned for refund or credit.

Revised 3.26.24