

# VividLeds

ILLUMINATING YOUR GREEN FUTURE

## Exite Series

Multi-Application Luminaires  
with Multiple Optics and Mounting Options



Vivid Leds, Inc. PO BOX 9, Sellersburg, IN 47172

Phone: 330-809-0431 Email: [sales@vividleds.us](mailto:sales@vividleds.us) [www.vividleds.us](http://www.vividleds.us)

# EXTREME FLOOD & SPOT LIGHTING



## Exite FL

8 IES Distributions  
5 CCT Choices

### Models:

- WDFLE25300 – 1 Module – 300W – 45000 Lm
- WDFLE25600 – 2 Modules – 600W – 90000 Lm
- WDFLE25900 – 3 Modules – 900W – 135000 Lm
- WDFLE25120 – 4 Modules – 1200W – 180000 Lm



Dark Sky  
Compliant Visor

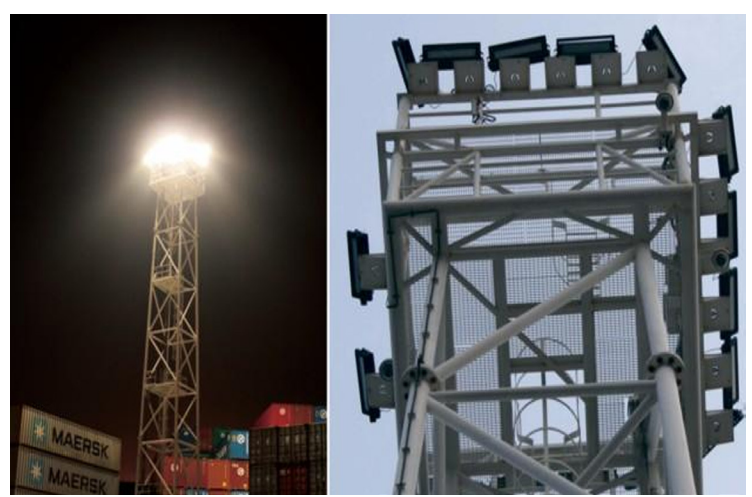
Trunnion  
Adjustable 30 Degrees

Independently  
Adjustable Modules

Customizable  
Housing Color



# INTENSE LIGHT OUTPUT



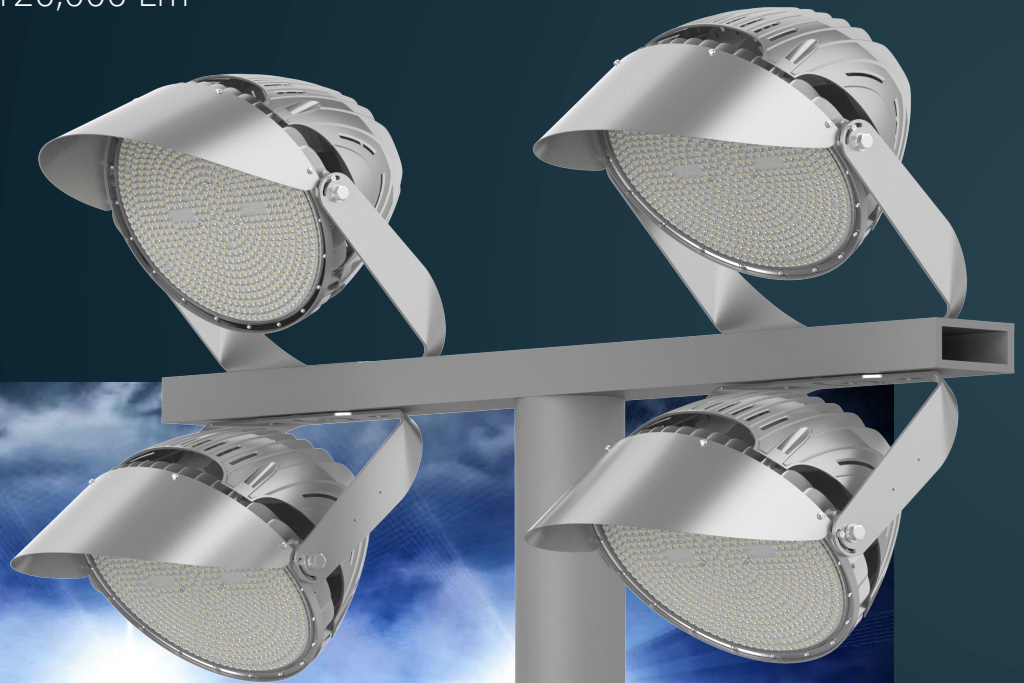
# STADIUMS IN A NEW LIGHT

## Exite Max / Elite

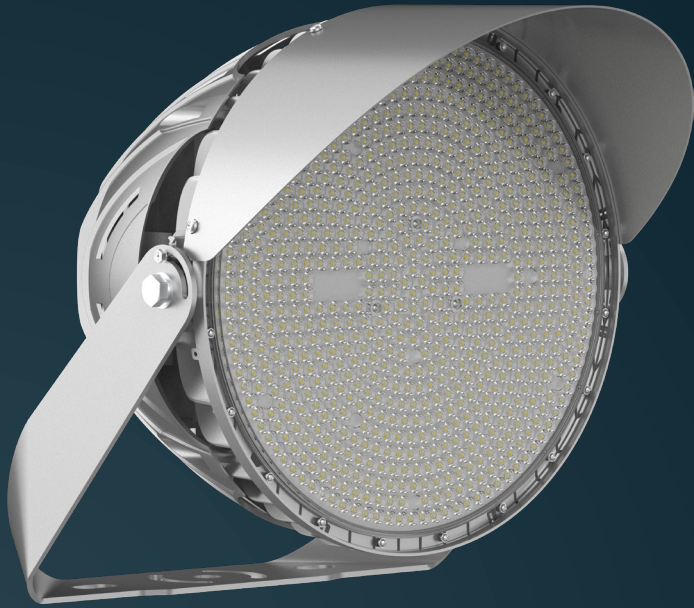
6 IES Distributions / 5 CCT Choices

### Models:

- WDSP9400 – 400W – 60,000 Lm
- WDSP9500 – 500W – 75,000 Lm
- WDSP9680 – 680W – 102,000 Lm
- WDSP9800 – 800W – 120,000 Lm
- WDSP91000 – 1000W – 145,000 Lm
- WDSP91200 – 1200W – 174,000 Lm
- WDSP91300 – 1300W – 195,000 Lm



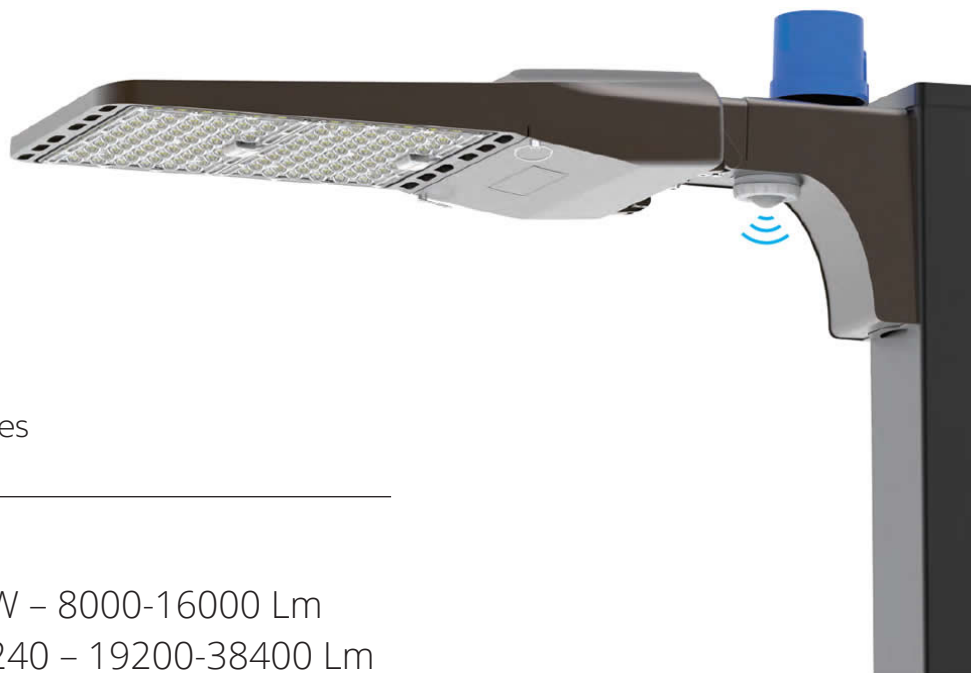
**>150 LM/W**



# AREA/SITE/PARKING LOT/FLOOD

## Exite PL

- Wattage Selectable
- 4 Mounting Options
- 7 IES Distributions
- 6 Color Tunable CCT Choices



### Models:

- VVDAF1 – 50/65/80/100W – 8000-16000 Lm
- VVDAF2 – 120/150/200/240 – 19200-38400 Lm
- VVDAF3 – 240/300/400/500W – 38400-80000 Lm



TR - 180 Degree Adjustable Trunion



SF - 180 Degree Adjustable Slipfitter



U - Large Adjustable Yoke Bracket



EA - Arm Mount for Wall or Pole

# HIGH BAY/LOW BAY



## Exite Pro

- Wattage Selectable
- 5 Mounting Options
- 6 IES Distributions
- 3 Color Tunable CCT Choices



## Models:

- VDH B1 - 60/80/100W - 9600-16000 Lm
- VDH B2 - 80/120/150W - 12800-24000 Lm
- VDH B3 - 120/150/200W - 19200-32000 Lm
- VDH B4 - 150/200/240W - 24000-38400 Lm
- VDH B5 - 200/240/300W - 32000-48000 Lm
- VDH B6 - 300/400/500W - 48000-80000 Lm

# WHY GET EXCITED:

- 1** HIGH EFFICACY PHILIPS LUMILEDS LUXEON 2835 2D LEDS UP TO 160 LM/W
- 2** DIMMABLE BY 1-10V, PWM, RESISTANCE, OR DALI
- 3** IK08 TEMPERED CLEAR GLASS LENS FOR DURABILITY AND CLARITY
- 4** DESIGNED FOR HARSH TEMPERATURE AND HIGH HUMIDITY
- 5** INDUSTRIAL COLD FORGED DIE CAST FIXTURE HOUSING
- 6** EXCELLENT RESISTANCE TO CORROSION, UV DEGRADATION AND ABRASION
- 7** ELECTROPHORESIS SURFACE TREATMENT WITH STAINLESS HARDWARE
- 8** SHORT CIRCUIT, CURRENT, VOLTAGE & TEMP PROTECTION
- 9** IP66 WASHDOWN RATED FOR INDOOR OR OUTDOOR APPLICATIONS
- 10** CERTIFICATIONS: CE, ROHS, FCC, TUV, IK10, CUL, UL, DLC PREMIUM