

Garden light manual

Installation diagram:

- ① Then tighten the lamp and lamp holder with four screws



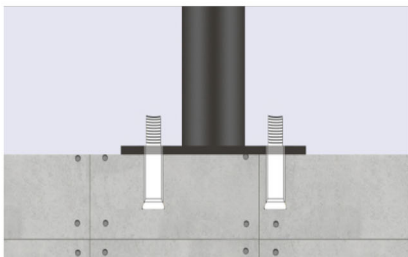
- ② Then turn on the switch and the light will turn on automatically at night.



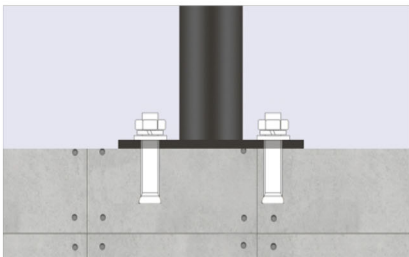
- ③ Tighten the screw between the lamp head and the lamp pole.



- ④ Lamps required installation location drilling in expansion screw put in the lamps



- ⑤ Then tighten four nut to complete installation



- ⑥ Installation completion effect



Product exploded view



★ Precautions

- Please pay attention to fixing lamps so as not to hurt people when the wind blows.
- In order not to affect the use of lights, clean up the dust and dirt on the surface of the solar panels every 3 months.
- Please check regularly whether the thread has come off or broken.
- Solar powered lamps contain batteries. Batteries are recyclables. Please do not litter.

