

Product Description

The Twilight Z9 offers a basic solution that applies to even the most difficult applications. With a IK07 impact resistant grade aluminum alloy housing, tempered glass cover, IP66 waterproof rating, a variety of CCT's and beam angles, and adjustable mounting brackets, the Twilight Z9 shines above the rest.

> Special Order - Minimum 30 Day Lead Time

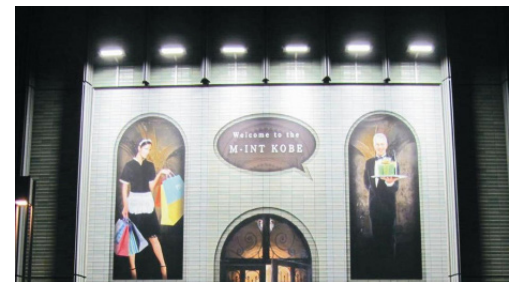
Project:		Type:
Location:		
Prepared By:		Date:
Comments:		

Performance Summary

- Philips OSRAM LEDs with efficacy >35 Lm/W color and >85 Lm/W white**
- National listing lab tested to IES standard
- High lumen maintenance exceeds DOE requirements
- Solid State with high-shock and vibration resistance
- Easy installation with 165 degree rotating mounting brackets
- High vertical illuminance for large space lighting
- IK07 impact resistant grade aluminum alloy housing with low heat generation
- Streamlined housing, no rough edges or scraping, with 304 stainless steel hardware
- Corrosion resistant, durable, with high efficiency
- Durable tempered glass cover with water resistant protection
- Precise optic over each LED reduces glare and enhances uniformity
- 1/9th LED micro color binning enables tight color control
- Hot color targeting ensures color is within ANSI bin compliance
- CNC machined LED boards are flatness controlled to 0.1mm
- High quality and efficient thermal heatsinks for long life
- 5' power cable whip, H05RN-F, 3*0.75mm², Ø6.8
- 1.5' power cable in and out linkable option
- High power factor with IC controlled LED circuits and low THD driver
- Low junction temperature for long life and low lumen depreciation
- Instant illumination and restrike with no warm up or cold start issues
- Contains no mercury, lead, infrared or UV radiation and cool to the touch
- Commercial CRI: RA>70, up to CRI: RA>90 optional
- Operating temperature: -20 to 40 degrees celsius
- IP66 rated, applicable for indoor or outdoor applications
- Constant current driver with universal voltage
- 100,000 hour LED life
- Certifications: CE, RoHS, ETL, cETLus
- 1 Year Warranty - 3 Year Optional

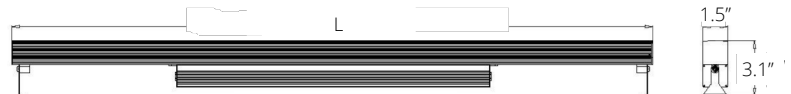
TWILIGHT Z9 SC

Static Color, Static White
LED Wash, Stripe or Graze



Models:

- VVDZ9W38L03: 9 LEDs - 9W - 12.4" (L) - 2.4 Lbs
- VVDZ9W38L06: 18 LEDs - 18W - 24.2" (L) - 3.5 Lbs
- VVDZ9W38L12: 36 LEDs - 36W - 48" (L) - 5.5 Lbs



Ordering Information:				Part Number:	Ordering Example: VVDZ9W38L12-N-15-ND-BK-UNV1		
Family	CCT	Optic	Dimming	Finish	Voltage	Accessories*	
VVDZ9W38L03 VVDZ9W38L06 VVDZ9W38L12	W - Static White - 3000K N - Static White - 4000K C - Static White - 6000K R - Static Red - 625nm G - Static Green - 525nm B - Static Blue - 460nm Y - Static Yellow/Amber - 590nm	15 - 15 Degree 30 - 30 Degree 45 - 45 Degree 60 - 60 Degree 10 - 10x45 Degree 55 - 15x55 Degree 20 - 20x40 Degree	ND - Non Dim DM - 0-10V* DMX - DMX	BK - Black CS - Custom*	UNV1 - 100-240 VAC UNV2 - 240-277 VAC*	LK - Linkable Power GP - Grounded Plug P - Power Cable Extension Per Foot EA6 - 6" Ext. Arm Pair EA12 - 12" Ext. Arm Pair EA18 - 18" Ext. Arm Pair CRI80 - 80 CRI CRI90 - 90 CRI	



Vivid Leds, Inc.
PO BOX 9
Sellersburg, IN 47172
330-809-0431
www.vividleds.us

Dimensions, specifications, and product pictures are subject to change without notice.

**85 Lm/W is based on 6000K white CCT

The product on this page is a manufactured to order, non-stocking item. This product cannot be returned for refund or credit.

J15

Revised 4.3.24