

Product Description

The Alume LX C1D2 Hazardous Linear uses an industrial grade die-cast ADC12 aluminum housing and anti-corrosion powdercoat in a IP66 design, which features high-performance illumination that lasts up to 100,000 hours. The system includes 10KV surge protection, a high efficacy and low decay 700 MA LED chip, and shock and vibration resistant tempered glass lens. Replaces up to 250W MH/HPS in a retrofit environment.

> Quick Ship - In Stock, Ready to Ship

Project:		Type:
Location:		
Prepared By:		Date:
Comments:		

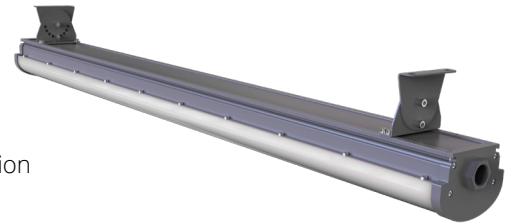
Performance Summary

- Energy-efficient Bridgelux SMD LEDs with high efficacy >140 Lm/W
- In stock and ships from several U.S. locations for quick delivery
- Better visibility than HID with crisp, 5000K anti-glare, white light
- Patented design with high quality components, excellent choice for retrofitting
- Listed for hazardous locations per UL844 for Class 1, Div 2, Groups A, B, C, D
- Heavy duty and high impact resistance
- Solid State with IK09 high-shock and vibration resistance - 3G vibration tested
- Patented heat dissipation design for optimum efficiency - T4 temperature rating
- National listing lab tested to IES standards with Type V 120 x 120 degree optic
- High lumen maintenance exceeds DOE requirements
- 1/9th LED micro color binning enables tight color control
- High transmittance tempered glass lens over the LEDs
- Adjustable stainless steel ceiling or wall mount bracket and a suspension kit is included
- Copper-free aluminum housing with marine grade powdercoat finish
- Surface powdercoat is salt, chemical, and dust resistant
- Housing is sandblasted and polished for corrosion resistance, rust free and fadeless
- Streamlined housing, no rough edges or scraping, with SUS316 stainless steel hardware
- CNC machined LED boards are flatness controlled to 0.1mm to speed up heat dissipation
- Replaceable aluminum LED boards with copper tracings for best thermal management
- LED array manufactured using a state-of-the-art SMT machine
- Copper condensation valve balances the air pressure and prevents water vapor accumulation
- Cooling fins are added to the heatsink for low temperature and higher efficiency
- Shock and vibration resistant tempered glass lens with 95% light transmittance
- Patented double waterproofing design on the radiator and module to prevent condensation
- Advanced constant current Meanwell HLG power supply in integrated junction boc
- LED driver complies with UL standard UL1012
- Fast turn on with no warm up or cold start issues
- Excellent optical presentation for multiple applications
- Unmatched thermal management and proven lumen maintenance ratio
- Improved illumination performance and excellent optics control
- High power factor with IC controlled LED circuits and low THD driver
- Low junction temperature for long life and low lumen depreciation
- Instant illumination and restrike with no warm up or cold start issues
- Contains no mercury, lead, infrared or UV radiation and cool to the touch
- Commercial CRI: RA>72, enhances original colors
- Operating temperature: -40 to 55 degrees celsius
- Thermal protection reduces the LED output if case temperature exceeds 50C
- 100,000 hour LED life - IP66 rated for outdoor locations
- Certifications: CE, RoHS, TUV, IECEx, IEC, ABS, energyAPI, UL, cUL, DLC
- 10 year limited warranty

Alume LX C1D2 Linear

Class 1, Division 2 Hazardous Linear

LED Luminaire



Vivid Leds, Inc.
PO BOX 9
Sellersburg, IN 47172
330-809-0431
www.vividleds.us

Dimensions, specifications, and product pictures are subject to change without notice.

The product on this page is a manufactured to order, non-stocking item. This product cannot be returned for refund or credit.

F5

Revised 2.6.23

Applications:

Oil and Gas industry

- All petroleum production and refining
- Petroleum loading and transportation
- Petroleum storage and retail
- LNG industry
- All mining operations and service

Chemical industry

- All types of paint facilities
- Chemical production and storage

Ocean, marine and aerospace field

- Ocean platform operation facilities and structure
- Aerospace clean room and production
- Ocean vessel operations

Metal treatment

- Steel and aluminum factories
- Pumping stations in any environment
- Metal smelting, foundry and fabrication

Food and alcohol industry

- Flour and fine particle production and storage
- Food and distilling production
- Alcohol industry

Explosion Protection:

ATEX

- II2 G Ex mb eb IIC T4 Gb
- II2 D Ex tb IIIC T135°C Db IP66
- II3 G Ex ec IIC T3 Gc

IECEX

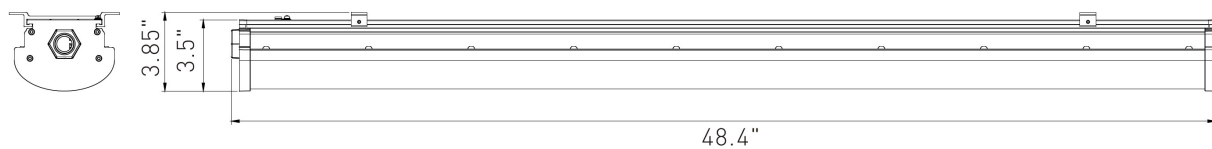
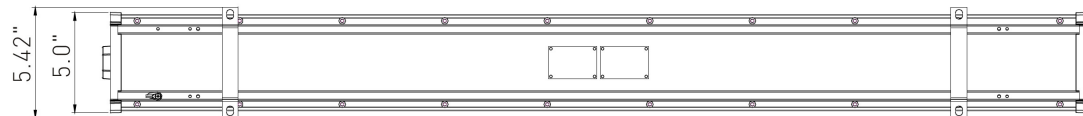
- Ex mb eb IIC T4 Gb
- Ex tb IIIC T135°C Db IP66
- Ex ec IIC T3 Gc
- Ex tb IIIC T85°C Db IP66

UL844

- Class I, Division 2, Groups A, B, C, D
- Class II, Division 1, Groups E, F, G
- Class II, Division 2, Groups F, G
- Class III

Marine

- UL 1598, UL1598A
- ABS



Models:

- WDCCEL60W - 60W - 8400 Lm - 4' Linear - EPA 0.61

Ordering Information:					Part Number:
					Ordering Example: WDCCEL60W-50-T5-V27-GR
Family	CCT	Optic	Voltage	Finish	
WDCCEL60W	50 - 5000K	T5 - 120 Degrees	V27 - 100-277V	GR - Gray	



Vivid Leds, Inc.
PO BOX 9
Sellersburg, IN 47172
330-809-0431
www.vividleds.us

Dimensions, specifications, and product pictures are subject to change without notice.

The product on this page is a manufactured to order, non-stocking item. This product cannot be returned for refund or credit.

F5

Revised 2.6.23