

Product Description

This trapezoid and half moon full cutoff wall pack is elegant as it is functional. With high performance LEDs and long lasting driver, this fixture provides effective lighting all around. It can be used around factories, restaurants, shopping centers, etc. Have full control of your output with the wattage selectable feature from 15W to 75W LED.

> Quick Ship - In Stock, Ready to Ship

Project:		Type:
Location:		
Prepared By:		Date:
Comments:		

Performance Summary

- Energy-efficient Philips Lumileds SMD LEDs with high efficacy >130 Lm/W
- USA assembled product with quick warranty support
- In stock and ships from several U.S. locations for quick delivery
- Standard design with modern components, excellent choice for retrofiting
- Better visibility than HID or fluorescent with crisp, white light
- National listing lab tested to IES standard
- Full cutoff design with IES forward throw optics
- Patented design with high quality components, excellent choice for retrofiting
- High lumen maintenance exceeds DOE requirements
- Solid State with high-shock and vibration resistance
- A360 ingot die-cast aluminum alloy housing with bronze powdercoat finish
- Five stage chromate conversion coating for long lasting appearance
- Streamlined housing, no rough edges or scraping, with 304 stainless steel hardware
- Housing and driver compartment is one piece to maximize heat dissipation
- Innovative quick mount bracket for easy, contractor friendly installation
- 1/9th LED micro color binning enables tight color control
- Hot color targeting ensures color is within ANSI bin compliance
- CNC machined LED boards are flatness controlled to 0.1mm to speed up heat dissipation
- LED array manufactured using a state-of-the-art SMT machine
- Shatterproof polycarbonate diffused lens over the LEDs with rubber grommet
- Serviceable constant current Sosen driver with optional 10KV surge protection
- High power factor with IC controlled LED circuits and low THD driver
- Low junction temperature for long life and low lumen depreciation
- Instant illumination and restrike with no warm up or cold start issues
- Contains no mercury, lead, infrared or UV radiation and cool to the touch
- Commercial CRI: RA>70
- Operating temperature: -40 to 50 degrees celsius
- 100,000 hour LED life of maintenance-free, safe operation
- IP65 rated for indoor or outdoor locations
- Certifications: CE, RoHS, FCC, UL, cUL, DLC
- 10 year limited warranty

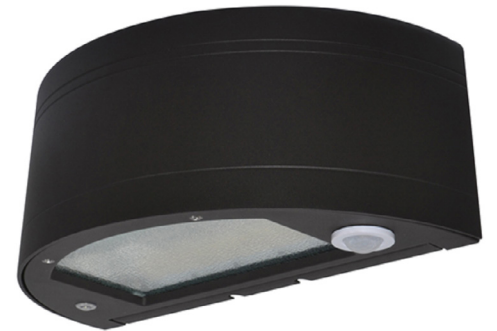
Raptor WS

Wattage Selectable Full Cutoff Polycarbonate Wall Pack

Title 24 Compliant LED Luminaire



WVDSML301



WVDSML302



Can Mount
Up or Down

Models:

- WVDSML301: Trapezoid - 15W/30W/50W/75W - 8407 Lm - 9.25" (W) x 16.5" (L) x 7.1" (H) - 10 Lbs
- WVDSML302: Half Moon - 15W/30W/50W/75W - 8621 Lm - 9.25" (W) x 18.1" (L) x 7.1" (H) - 12 Lbs

Ordering Information:				Part Number:		
*Adder Applies				Ordering Example: WVDSML301-40-S5-UNV-BZ-ND		
Family	CCT	Optic	Voltage	Finish	Dimming	Accessories*
WVDSML301 WVDSML302	40 - 4000K 50 - 5000K	S5 - Forward Throw	UNV - 120-277V	BZ - Bronze CS - Custom*	ND - Non Dim	OC - Occupancy Sensor EM - 8W Battery Backup SP - 10KV Surge Protection PC - Button Photocell



Vivid Leds, Inc.
PO BOX 9
Sellersburg, IN 47172
sales@vividleds.us
www.vividleds.us

Dimensions, specifications, and product pictures are subject to change without notice.

Dimensional pictures are for reference only. They do not represent the actual fixture's shop drawing or design.

D9