



WARNING

PLEASE READ ALL INSTRUCTIONS BEFORE ATTEMPTING INSTALLATION

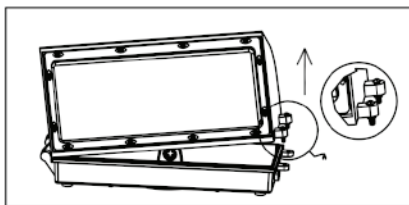
- To prevent personal injury or product damage only licensed electricians should install.
- To avoid electric shock or component damage disconnect power before attempting installation or servicing.
- This product must be installed in accordance with the national electric code (NEC) and all applicable federal, state and local electric codes and safety standards.
- Disconnect product and allow cooling prior to servicing.
- Any alteration or modification of this product is expressly forbidden as it may cause serious personal injury, death, property damage and/or product malfunction.
- To prevent product malfunction and/or electrical shock this product must be properly grounded.
- This luminaire is designed to operate in ambient temperatures ranging from -30° c to 45° c and to be horizontally mounted with the LEDs facing down.
- Wall Pack only.

1. Unpacking

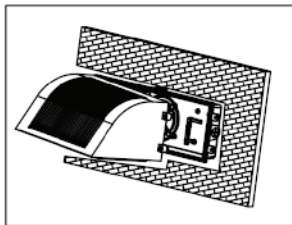
Thoroughly inspect the fixture for freight damage. Freight damage should be reported to the delivery carrier.

2. Installation

- 1) . Take off the screw of the heat sink and take off the front lid carefully from the back. The angle between the front cap and the back cap should be 0-45 degrees.



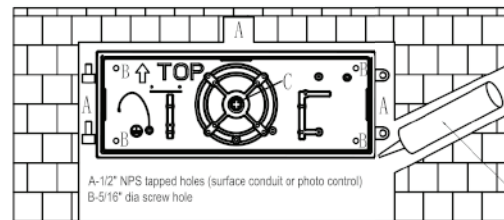
- 3). Connect wire A with wire C (The black one is L, white one is N, and the yellow one is ground wire), installing the front cap .



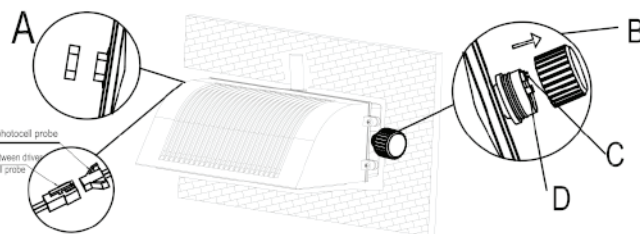
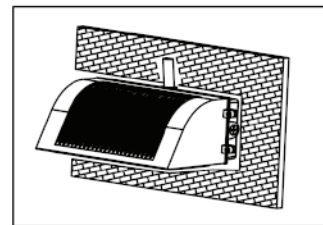
3. Field-Adjustable Wattage & CCT & photocell

- 2) . A: After determining a place to put a conductor, take off the 1/2" cap and make a hole according to the example (B). Fix it on the wall with an appropriate screw. (Please use glue to block the hole to prevent water leakage.)

- 2) . B: When installing the junction box, take off the 1/2" cap of the C wire in the middle. This product supports standard 3 1/2" and 4" junction box. After installing the back cap on the wall ,use waterproof sealer to seal it.



- 4). Make sure all wires are connected correctly , and lock up with the screw.



C		Watts	D
NO.1	NO.2		
↓	↓	70W	
↓	↑	60W	
↑	↓	45W	
↑	↑	30W	

- 2). Take off the cover, set your wattage and CCT according to draft C and draft D, then cover it.

- 1) . If you need the light photocell function, remove the light control cover A.

4. Checking

- 1). Does all the wires connect in a correct way as the pictures show below?
- 2). Is the ground lead installed appropriately?
- 3). make sure the photocell function well.

