

Product Description

With a unique high purity die cast aluminum heatsink, high brightness SMD LEDs, high efficiency constant current power supply, and an IP65 rating, the Iris AR Series is an excellent choice for parking lots and other applications that require a Type III optic. The build quality of this fixture is outstanding, with many features, that will last for years to come.

> Quick Ship - In Stock, Ready to Ship

Project:		Type:
Location:		
Prepared By:		Date:
Comments:		

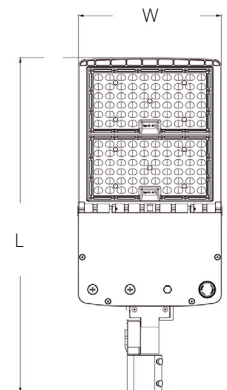
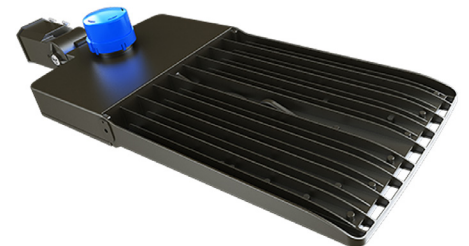
Performance Summary

- Energy-efficient Philips Lumileds SMD LEDs with high efficacy >140 Lm/W
- In stock and ships from several U.S. locations for quick delivery
- Standard design with modern components, excellent choice for retrofitting
- Better visibility than HID or fluorescent with crisp, white light in 5000K CCT
- Modular design with Type III IES degree beam angle
- National listing lab tested to IES standards
- High lumen maintenance exceeds DOE requirements
- Aviation grade die cast housing with professional anodized bronze finish
- Housing is sandblasted and polished for corrosion resistance, rust free and fadeless
- Streamlined housing, no rough edges or scraping, with SUS316 stainless steel hardware
- Housing and driver compartment is one piece to maximize heat dissipation
- 1/9th LED micro color binning enables tight color control
- Hot color targeting ensures color is within ANSI bin compliance
- CNC machined LED boards are flatness controlled to 0.1mm to speed up heat dissipation
- LED array manufactured using a state-of-the-art SMT machine
- Copper condensation valve balances the air pressure and prevents water vapor accumulation
- High quality and efficient thermal heatsinks for long life
- Cooling fins are added to the heatsink for low temperature and higher efficiency
- Shatterproof polycarbonate anti-glare semi-transparent lens over the LEDs
- Choice of straight adjustable arm or by slipfitter 2.375" (60mm) O.D.
- Slipfitter is adjustable +/- 90 degrees
- Patented double waterproofing design on the radiator and module to prevent condensation
- Advanced constant current Sosen 0-10V dimmable power supply with 6KV surge protection
- Fast turn on with no warm up or cold start issues
- Contains no mercury, lead, infrared or UV radiation and cool to the touch
- Commercial CRI: RA>80
- Operating temperature: -40 to 50 degrees celsius
- 100,000 hour LED life - IP65 rated for outdoor locations
- Certifications: CE, RoHS, CB, SAA, ERP, ENEC, UL, cULus, DLC
- 10 year limited warranty

IRIS AR

Multiple Mounting Options

Wattage Selectable LED Dimmable Luminaire



Models:

- WVDNWS0NZ: 80W/100W/150W - Up to 21000 Lm - 22.8" (L) x 12.9" (W) x 2.3" (H) - 11 Lbs - EPA 1.3
- WVDNWS1NZ: 100W/150W/200W - Up to 28000 Lm - 22.8" (L) x 12.9" (W) x 2.3" (H) - 11 Lbs - EPA 1.3
- WVDNWS2NZ: 150W/200W/300W - Up to 42000 Lm - 25.9" (L) x 15.8" (W) x 2.3" (H) - 16 Lbs - EPA 1.8

Ordering Information:				Part Number:		
Ordering Example: WVDNWS0NZ-50-T3-V27-BZ-SPA-PC						
Family	CCT	Optic	Voltage	Finish	Mounting	Controls
WVDNWS0NZ WVDNWS1NZ WVDNWS2NZ	50 - 5000K	T3 - Type III	V27 - 100-277V	BZ - Bronze	SPA - Adjustable Slipfitter AAM - Adjustable Arm Mount	PC - Photocell



Vivid Leds, Inc.
PO BOX 9
Sellersburg, IN 47172
330-809-0431
www.vividleds.us

Dimensions, specifications, and product pictures are subject to change without notice.

A3