

LED WALL WASHER

TWILIGHT Z4 SERIES

INSTRUCTION OF LED WALL WASHER

This product is mainly used for decorating and highlighting in building frame, garden, etc. It can work in independent mode and DMX mode, which can generate various color changing effects, such as flashing, fading, steady, seven color jumping synchronously etc. DMX256 class gray degree dimmer, DMX programable (thousands of effects. available if many lights being connected together)

Specification:

1. Structure:

Material of Shell: Aluminum alloy/6063
 Rotary angle: 180°
 Input Voltage: 100~240V AC
 Operating Voltage: 24V DC
 Protection Rating: IP65
 Operating Temperature: -20°C-40°C



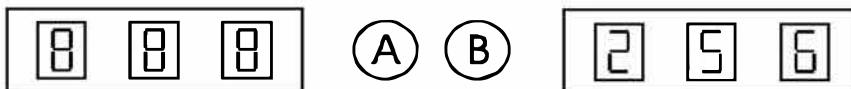
Working Mode:

1. Independent Mode: Choose the build-in programs via the buttons on the end cover.
2. DMX Mode(4CH): International standard DMX512 signal(XLR-3).
3. Master/Slave Mode: Auto online and synchro working.

Function & Setup

1. DMX Addressing

When the digital LED is not flashing, press A, digital LED begin to flash, press A once, active digital LEDs moves backward, you can start to edit the second digital LED; Press B, the corresponding flash digital LED increase one bit(the values between 1 to 9);
 *** Valid DMX Address: 001~510



2. Independent Mode

After pressing A four times(the first three times is the setup on DMX address)or B directly, light enter into independent mode; the digital LEDs shows PXY, press A once, active digital LEDs moves backward, you can choose function via X and parameter via Y; Press B, the corresponding flash digital LED increase one bit(range: 1~9);



X refer to functions(the value between 1 to K), Y refer to value of speed and gray degree for the functions(the value between 1 to 9).
 Function and parameter sheet:

X value	Y value
1-static red	1-9 class gray degree
2-static green	1-9 class gray degree
3-static red+green	1-9 class gray degree
4-static blue	1-9 class gray degree
5-blue+red	1-9 class gray degree
6-blue+green	1-9 class gray degree
7-red++green+blue	1-9 class gray degree
8-static white	1-9 class gray degree
9-white+red	1-9 class gray degree
A-white+green	1-9 class gray degree

X value	Y value
B-white+red+green	1-9 class gray degree
C-white+blue	1-9 class gray degree
D-white+blue+red	1-9 class gray degree
E-white+blue+red	1-9 class gray degree
F-white+red+green+blue	1-9 class gray degree
G-multicolor changing	1-9 class speed
H-single fading	1-9 class speed
I-multicolor fading	1-9 class speed
J-multicolor flashing	1-9 class speed
K-autorun	1-9 times circle

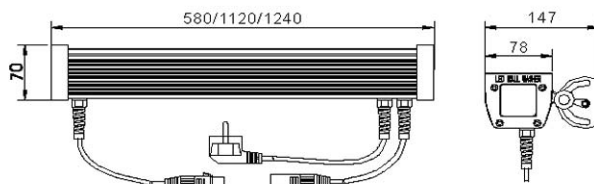
LED WALL WASHER

C-3. Master/Slave Mode

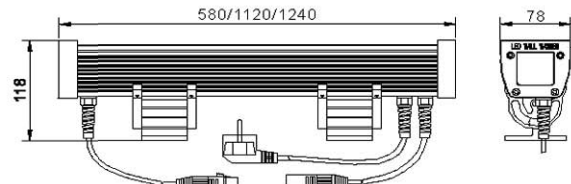
Choose any one light as the master for attaining auto online function, the operations are as below: firstly, set the address of master as 001, others are set as slave (address can be any one except 001); Change function of the master (001) light, then all lights will work synchronously;

C-4. When pressing button, please wait for about 10 sec, then you can exit the mode of adjustment function, the digital LED stop flashing and data recorded.

Dimension Drawing



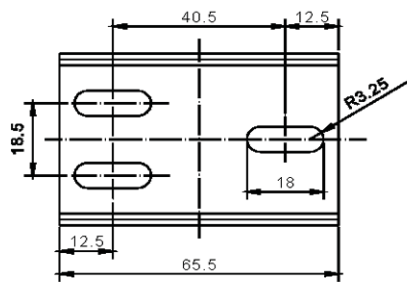
Side mounting leg



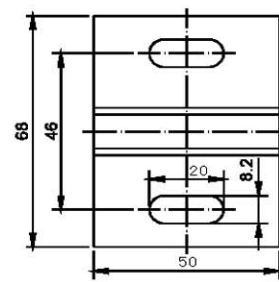
Bottom mounting leg

Installation Drawing:

Fix the brackets via M4 tapping screw, mounting size as below:



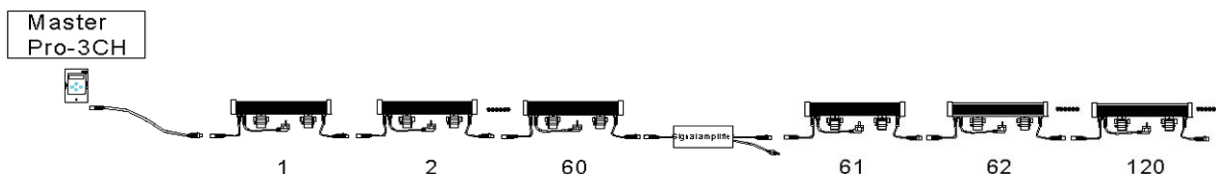
Mounting Hole



Mounting Hole

Connection

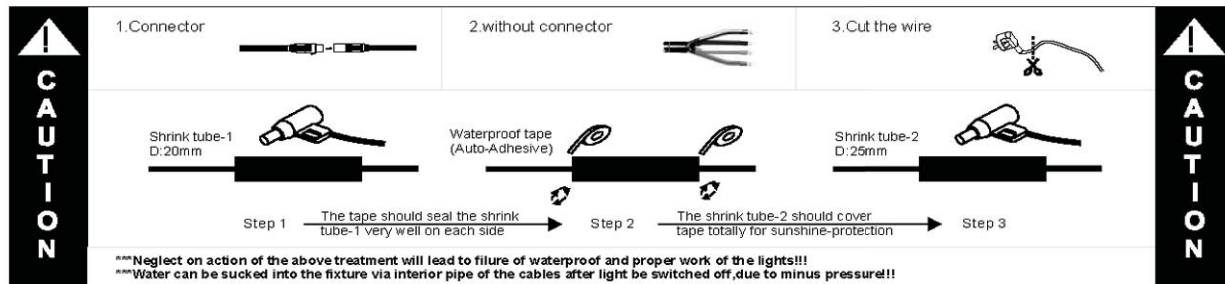
1. Signal max connection is 100m, every 100m or 60pcs fixtures need a signal amplifier.
2. Optional controller: MASTER PRO、Sunlite、DMX-192C、Madrix and other DMX controller.



Waterproof Treatment

The signal connector (XLR-3) must be sealed with a 20mm thermal shrinking tube (-1), blow and shrink it with a hair driers; thence wrapped with waterproof tape (auto-adhesive, please refer to below instruction for operation) on both side; Blow the second 25mm shrink tube (-2) at last so as to protect waterproof tape under sunshine and guarantee the waterproof validity.

LED WALL WASHER



*** Power connector should be treated in the same way if available!!!

Caution:

1. Do not plug them into power when the product is still in package;
2. Don't use anything to cover the fixture during application;
3. Don't use this product in close environment;
4. If this product appears to be damaged, do not attempt any repair, please contact your dealer.

Warning:

- * Neglect on action of the above treatment will lead to failure of waterproof and proper working of the lights!!!
- * Make sure the ground connection well avoid electric shock, due to metal housing.

Note: The above instruction are subject to update or improved without notice.Pls turn to our staff for further details !
Thanks for your long term support !