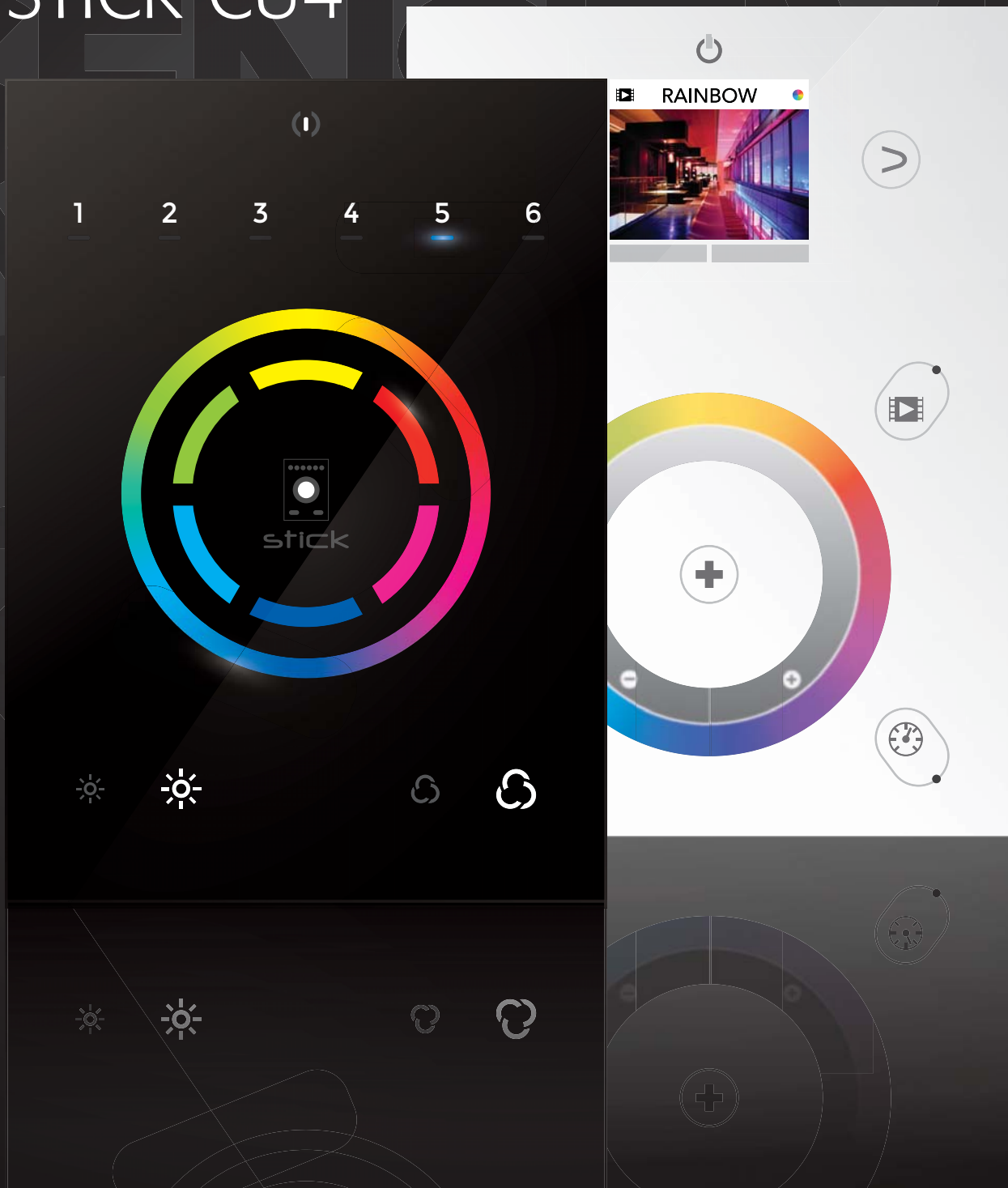


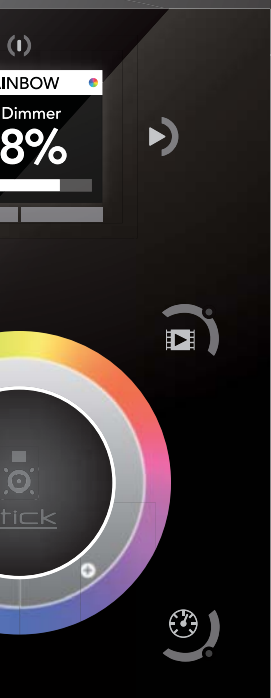
stick

SUNLITE TOUCH-SENSITIVE INTELLIGENT CONTROL KEYPAD

New
STICK-CU4



THE INDUSTRY STANDARD IN LIGHTING CONTROL



Flat wall mounted lighting controller

Boîtier de contrôle mural | Controlador plano, montaje de pared | Flach montierbarer Lichtsteuerung

State of the art design and technology

Design et prestations haut de gamme | Diseño novedoso y de alta tecnología | Modernstes Design und Technologie

Ideal for LED, RGB and DMX lighting

Idéal pour les éclairages DMX à LED | Ideal para LED, RGB y DMX | Ideal für LED, RGB und DMX Beleuchtung

Stand alone touch sensitive control panel

Panneau de commande sensible autonome | Pantalla sensible al tacto | Berührungsempfindliches Bedienfeld

128 to 1024 DMX OUT channels

1024 canaux DMX en sortie | 1024 canales DMX OUT (2 Universes) | 1024 DMX OUT Kanäle (2 Universes)

USB connection for easy programming

Logiciel de programmation via USB | Programación del software via USB | USB Verbindung zum Softwareprogrammieren

iPhone, iPad, Android applications

Applications pour smartphones | El software para los smartphones | Smartphones Programmieren

Ethernet RJ45 connection and synchronization

Fonctions Réseau-Ethernet avancées | Características Ethernet avanzadas | Tiefe Ethernet-Network anwendungen

Unlimited memory via SDCARD

Mémoire SDCARD, capacité virtuellement illimitée | Memoria ilimitada via SDCARD | Unlimitierter Speicher durch SD-Karten

Integrated clock/calendar

Horloge et calendrier intégrés | Reloj/Calendario Integrado | Integrierte Uhr und Kalenderfunktion

8 Ports, RS232, Infra Red

8 ports, RS232, Infrarouge | 8 puertos, RS232, Infra Red | 8 ports, RS232, Infra Red

Internet Design Center for customization

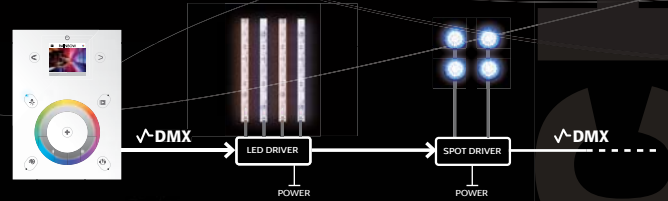
Personnalisation avec le Design Center | Centro de Diseño de personalización | Design Center für individuelle Anpassung



STICK-DE3+

Wall-mounted touch sensitive DMX controllers

The STICK range has been designed to offer the perfect lighting control solution for any environment. DMX data messages are sent directly from the STICK to a DMX compatible power supply (sometimes called a 'DMX Driver'). The power supply listens to the DMX messages and supplies the power to the lighting fixture. For example, an LED strip may use a 24 volt DMX power supply. The DMX messages are then passed on to the next lighting fixture or DMX driver.



The sensitive keys enable you to easily and comfortably modify the lighting effects...
Controlling both speed and color has now become mere child's play.



OVERVIEW

APPLICATIONS

RANGE

HARDWARE

SOFTWARE

OVERVIEW

APPLICATIONS

RANGE

HARDWARE

SOFTWARE

USE THE STICK

...ANYWHERE

exhibition

train station

restaurant

apartment

exhibition

garden

resort

home

hotel

monument

shop

hotel

monument



facade



stadium

museum

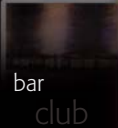
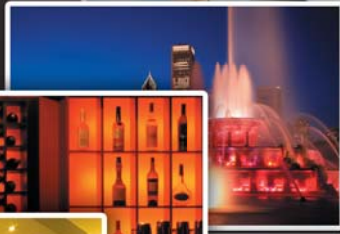
fountain

museum

apartment

office

office



bar
club



apartment

office



shop

ARCHITECTURAL LIGHTING

garden

airport



landscape

yacht

theme parks



residential

home

casino

stadium

landscape

commercial

casino

fountain

EASY SETUP ROBUST TECHNOLOGY

Thanks to their 'All-In-One' technology, each STICK package includes a high-tech keypad, stand alone memory storage and a powerful DMX512 lighting software package. Due to an absence of mechanical buttons, the strongly built STICK is timeless.

DESIGN, SOBRIÉTÉ INSTALLATION SANS DIFFICULTÉ

L'absence de bouton mécanique donne au boîtier STICK une sobriété et une robustesse à l'épreuve du temps. Les designers l'ont voulu ainsi. Le boîtier STICK est adaptable aux multiples formats de boîtes électriques encastrables.

français

DISEÑO SENCILLO FUERZA EXTREMA Y FÁCIL INSTALACIÓN

Al no tener botones mecánicos, la interfase fuerte STICK es a prueba-de-tiempo. Así es como los diseñadores lo planearon. Nuestra interfase STICK puede instalarse en una variedad de cajas eléctricas estándar.

español

ELEGANTES DESIGN EXTREME HALTBARKEIT UND ZUVERLÄSSIGKEIT

Aufgrund fehlender Druckknöpfe hält die Box den neuesten Anforderungen stand. Genau so haben es die Designer gewollt. Die STICK Box kann an verschieden große elektrische Einbaurahmen angepasst werden.

deutsch



STICK RANGE 5 PRODUCTS

The STICK range has been designed to offer the perfect lighting control solution for any environment. From the sophisticated STICK-GU2/GA2 and STICK-CU4 up to the powerful network functionality of the STICK-DE3+ and STICK-KE1, each STICK has been tailored to meet everyone's needs.

	STICK-GU2	STICK-GA2	STICK-CU4	STICK-DE3+	STICK-KE1	
General	Design	Glass	Glass	Glass	Plastic	
	Dimensions	86 x 86 x 11 mm	86 x 110 x 11 mm	106 x 146 x 10 mm	106 x 146 x 10 mm	130 x 170 x 11 mm
	Weight	113g	145g	200g	211g	177g
	USB connection	•	•	•	•	•
	Ethernet connection	•	•	•	•	•
	DMX channels	128	512	512	2x512	2x512
SD card				MicroSD card	MicroSD card	
Software	ESA software	PC	PC	PC	PC	PC
	ESA2 software	PC / Mac	PC / Mac	PC / Mac	PC / Mac	PC / Mac
	ESA Pro software				PC	PC
	Remote control apps				iOS / Android	iOS / Android
	Arcois app	Android / USB	Android / USB	Android / USB	Android	Android
	Sunlite Suite 2				PC	PC
Stand Alone	Number of scenes	24	99	36	500	200
	Number of zones	1	1	1	10	5
	Memory capacity (20 chan)	840	3200	2729	SD card limit	SD card limit
	Memory capacity (512 chan)		140	124	SD card limit	SD card limit
	Power voltage	5V-12V DC	5V-12V DC	5V-10V DC	5V-6V DC	5V-6V DC
	Power connector	Screw terminal block	Screw terminal or RJ45	Screw terminal or RJ45	Screw terminal or RJ45	Screw terminal block
Triggering	Live control	Color / Dimmer	Color / Dimmer	Color / Dimmer / Saturation	Color / Dimmer / Speed	Color / Dimmer / Speed
	Touch-sensitive buttons	3	4	12 + wheel	10 + wheel	12 + fader
	Port triggering	1	8	8	8	8
	Clock triggering				100	40
	RS232 triggering				•	•
	Infra Red triggering					•
Optional	AC/DC adapter*	Ref. POWER4M	Ref. POWER4M	Ref. POWER4M	Ref. POWER4M	Ref. POWER4M
	IR remote control*					Ref. IR-REMOTE
	RJ45 to BLOCK board		Ref. RJ2BLOCK	Ref. RJ2BLOCK	Ref. RJ2BLOCK	

*not included

STICK-GU2 DIMMER SWITCH OF THE 21st CENTURY

The STICK-GU2 is a sleek glass fronted DMX wall panel. Available in black and white, this small and easy to use interface packs in 3 touch sensitive buttons, Stand alone memory and USB into an intelligent wall mounted controller just 11mm thick!



- As simple as a dimmer switch
- 3 touch sensitive buttons
- Glass wall-mounted DMX controller
- Micro-USB for programming
- Customized design for OEM
- For PC, Mac & Tablet with USB
- 32bit ARM technology
- 86x86x11mm size
- Software included
- Stand alone operation
- Ready to use (pre-loaded)
- 128 DMX channels
- Up to 24 scenes

Compatible with :



Android app
via USB cable

STICK-GA2 MIGHTY POWERFUL BEAUTIFUL & CHARMING

The STICK-GA2 offers the best solution for projects requiring a large amount of scenes along with an uncluttered and intuitive interface. The computer programmable GU2 is capable of playing up to 99 scenes, each of which can be modified by touching the mode button to change the dimmer and color.



- Large memory capacity
- 4 touch sensitive buttons
- Glass wall-mounted DMX controller
- Micro-USB for programming
- Customized design for OEM
- For PC, Mac & Tablet with USB
- 32bit ARM technology
- 86x110x11mm size
- Software included
- Stand alone operation
- Ready to use (pre-loaded)
- 512 DMX channels
- Up to 99 scenes

Compatible with :



Android app
via USB cable

STICK-CU4 THE GENIUS OF THE STICK FAMILY



The STICK-CU4 programmable lighting controller, for RGB and RGBW lighting, has been designed around a touch sensitive colour wheel. The controller is USB programmable from a PC or Mac using the ESA2 software.

Up to 36 scenes can be stored within the controller and directly recalled via six touch sensitive scene buttons. A button located in the centre of the color wheel can be used to jump between scenes or reset a colour change.

✓ New generation, affordable price

512 DMX channels (block/RJ45)

6 banks of 6 scenes (36 scenes)

ESA2 software (PC/MAC)

Glass design (black only)

Direct access to all features

DIRECT ACCESS TO ALL FEATURES

POWER

Turn on/off

CENTRAL BUTTON

The central button functionality can be customized:

- Reset Color (default)
- Play next scene
- Select next bank (6 banks of 6 scenes)
- Select wheel scene mode
- No function

DIMMER

Make your lights brighter/darker.

SCENE

Up to 36 scenes can be stored within the controller and directly recalled via 6 touch-sensitive scene buttons.

COLOR RGB

Easily scroll through over 16 million colors. Or tap quickly to select 6 basic colors.

The selected color is shown by the RGB LED of the central button

SATURATION

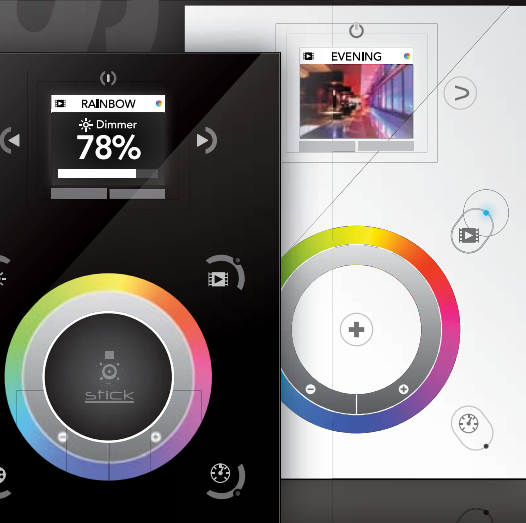
Adjust the saturation.

Compatible with :



STICK-DE3+ THE STAR OF THE STICK FAMILY

The feature rich STICK-DE3+ has been designed to provide a control solution for the most demanding of projects which anybody can use. The controller integrates a graphical color display allowing scene photos to be displayed. Easily view the selected zone, scene name and design without the need to navigate through complex menus.



- New glass design
- Graphical color display
- Color/dimmer/speed palette
- Touch sensitive buttons
- Touch sensitive wheel
- Multi-zone microSD memory
- 500 scenes, 10 zones
- 1024 DMX channels
- USB & Ethernet connectivity
- RS232, ports, infra red
- Clock and calendar
- Network communication
- Catalog of designs
- OEM customization
- Windows/Mac software
- iPhone/iPad/Android

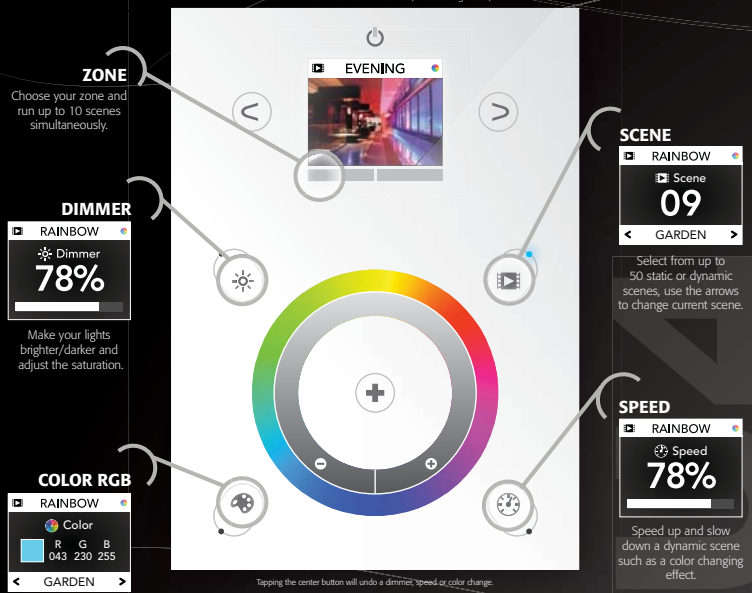
Compatible with :



THE LIGHTING CONTROLLER THAT EVERYBODY UNDERSTANDS

The STICK-DE3+ is based on 4 modes. Scroll around the touch sensitive wheel to change the dimmer, color, speed or scene or tap around the wheel for direct access to a value. The arrows can be used to step through values.

Use the arrows to switch between scenes (default configuration)



Select from up to 50 static or dynamic scenes, use the arrows to change current scene.

STICK-KE1 HOW TO USE ?

A truly simple controller: an on/off button at the top, 8 buttons to choose from up to 200 lighting effects (25x8), 2 buttons to cycle between pages and a horizontal fader to instantly adjust dimmer, speed and color.

français

COMMENT UTILISER LE STICK ?

Rien n'est plus simple : bouton on/off en haut, 8 boutons pour choisir l'ambiance lumineuse, 2 boutons pour changer de page, un fader horizontal pour modifier instantanément l'intensité, la vitesse ou la couleur des effets.

español

¿COMO UTILIZAR EL STICK ?

Nada es más sencillo: botón de encendido/apagado en la parte superior, 8 botones para escoger el efecto luminoso, 2 botones para cambiar la página, y debajo el fader horizontal para ajustar inmediatamente el dimmer, la velocidad y el color.

deutsch

KURZANLEITUNG DES STICK'S

Nichts ist einfacher: eine Ein- und Ausschaltfläche, 8 Schaltflächen um Lichtstimmungen und Effekte abzurufen, 2 Schaltflächen um zwischen den Seiten zu wechseln, und einen horizontalen Fader um den Direktzugriff auf Dimmer, Geschwindigkeit und Farbe zu ermöglichen.

STICK-KE1



A Blue LED is used to indicate whether the unit is on or off (Blackout).

Buttons 1-8 are used to select individual scenes. Scenes can be static or dynamic. Double pressing buttons 1-8 will reset the Dimmer, Speed, and Color to default.

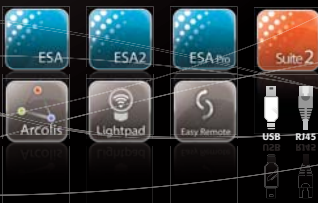
Used to cycle between 25 different pages (A,B,C,D,E x 5). In combination with buttons 1-8, 200 different scenes can be stored.

The select button allows you to cycle through the Dimmer, Speed, and Color fader controls. The fader at the bottom of the unit is used to select the intensity of the Dimmer, Speed, and Color settings.

The Green LED indicates that the Dimmer, Speed, and Color settings on the STICK are set to default. If the fader is moved to the right or left of the default (green), one of the 8 blue LED's will indicate your current intensity level.

The colored fader of the D2 design offers a direct access to basic colors with a simple touch.

Compatible with :



SIMPLE USE WITH USB



USB



Using the "plug and play" USB connection is the most simple way to program the STICK controller: connect the device, start the programming software, create the show and finally press the "write memory" button to save the show into the stand alone memory.

ADVANCED USE

90% of applications use USB and DMX512 connections only, but the most demanding of our customers will also be able to interface additional devices such as contact closures, UDP/TCP, RS232, Ethernet and more.

CONNECTIVITÉ SANS LIMITE

90% des applications n'utiliseront que les connexions USB et DMX512, mais les clients les plus exigeants pourront aussi interfacer d'autres périphériques: Contacts sec, UDP/TCP, Entrée RS232, Ethernet...

français

CONECTIVIDAD SIN LÍMITES

El 90% de las aplicaciones usarán solamente los conectores USB y DMX512; pero nuestros clientes más exigentes aprovecharán el resto de nuestros conectores como puertos I/O (contacto seco), UDP/TCP, entrada RS232 (serial), Ethernet...

español

UNBEGRENZTE KONNEKTIVITÄT

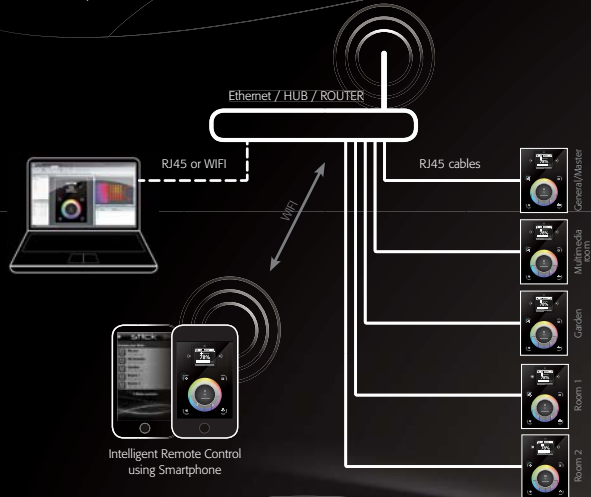
90% aller Geräte besitzen nur USB- und DMX512-Anschlüsse, aber unsere anspruchvollsten Kunden können weitere Bauteile, wie Kontaktschließer, UDP/TCP, RS232, Ethernet...

deutsch

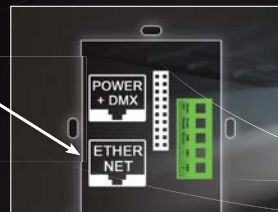
NETWORK SYNCHRONIZATION

The Ethernet connections of the STICK-KE1 and STICK-DE3+ offer the possibility to interconnect several STICK controllers for multi-room installations and direct control via a cable or wireless network using a computer or a smartphone. How does it work?

- A single ESA Pro show/document is used. This includes all DMX fixtures and areas.
- Multiple STICKs can be added in the Stand-Alone window. A different combination of scenes and areas can be assigned to each STICK.
- Each STICK controller's memory is written simultaneously using its name and IP address over the local network.
- Matching areas are synchronized between the STICKs. It is also possible to disable the synchronization of an area if required.



To access Ethernet network features, you need a STICK-KE1 or a STICK-DE3.



▲ Only STICKs of the same model can be synchronized



TIMELINES WITH ESA Pro SOFTWARE

ESA Pro combines many innovations along with an ergonomic design. It has been specifically designed for the STICK SD card range and includes powerful new tools required by the latest lighting fixtures. The software has been developed specially for architectural lighting and features easy to use effects which can be dropped onto timelines, along with multi-zone and multi-STICK synchronization allowing you to program a project with multiple rooms and areas with ease.

It is possible to setup several zones for a show allowing you to split up a building for example and to play different sequences in each room.

Each zone contains a list of scenes (sequences). They can be static or dynamic, loop or not...

In this window we can group the fixtures, setup their position and then use the «Rects» to define a virtual position for a sequence. We could for instance, play several videos on the same LED screen at different positions.

Every scene is built with the timelines. Thanks to this tool, it becomes very easy to build your show.

Various effects, static or dynamic (matrix effects, curves...) are available and can be dragged to the timelines.



NOUVEAU LOGICIEL ESA PRO

Le nouveau logiciel ESA Pro a été spécialement conçu pour l'éclairage architectural et combine la simplicité d'utilisation d'Easy Stand Alone et de nouvelles fonctionnalités nécessaires au contrôle des dernières générations de projecteurs à LED.

français

SOFTWARE NUEVO ESA Pro

El nuevo ESA Pro es creado para la iluminación arquitectónica y combina novedades ergonómicas. Ha sido diseñado para las características del STICK el cual incluye herramientas necesarias para fijaciones LED (línea de tiempo, zona-multiple...).

español

NEUE SOFTWARE ESA Pro

Das neue ESA Pro wurde speziell für den Einsatz in der Architekturbeleuchtung entwickelt und verbindet innovatives und ergonomisches Design. Natürlich wurde diese vornehmlich für die STICK Funktionalitäten gestaltet und enthält neue leistungsstarke Tools, die für die jüngsten LED Geräte benötigt werden. (Timeline, Multi-Zone, Kalender, Matrixsteuerung...)

deutsch

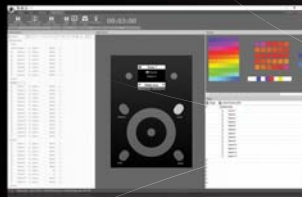


The live tab allows you to play the created sequences. You can either test your stand alone show before writing to the memory or use this tab for real-time control of your lights.

Thanks to the calendar, it becomes very easy to setup a time/date trigger for every scene. Simply drag the scene to the correct position.



The stand alone tab allows you to directly assign a scene to a button on the STICK. Simply drag and drop the scene onto the image. Once the scenes are assigned, press the «write» button to save the show into the stand alone memory.



NEW SOFTWARE ESA2 PC/Mac

Now compatible with both Windows and Mac, Easy Stand Alone 2 software has evolved over the years to become a worldwide reference for architectural lighting control. It only requires a few minutes to setup the software and gain full control of any kind of lighting.

TABS

- SETUP:** insert your lighting fixtures.
- EDITOR:** easily create your scenes.
- USER:** control your lights in live mode.
- STAND ALONE:** write to the DMX interface memory.

SCENES

Creating scenes can be carried out very easily. For each scene, the software allows you to determine any number of steps, the number of loops, as well as the following scene.

STEPS

Each Step has a fade time and a waiting time which can be set. By creating several steps in sequence, you will then build a dynamic scene.

SCENE BUILDER

Arrange your lighting fixtures and easily create stunning RGB/RGBW color mixing and moving effects with the new scene builder.

FADERS

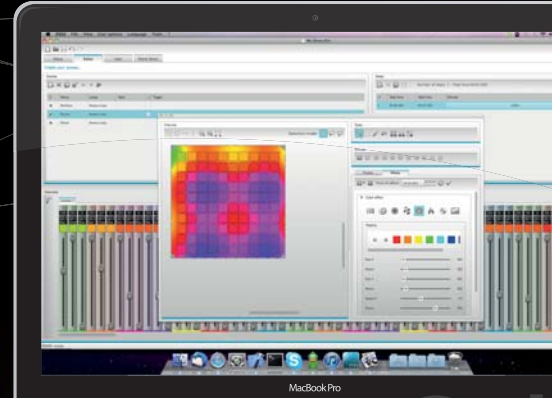
The vertical faders at the bottom of your screen correspond to the DMX level (0 to 255) for each channel. There are several ways to modify these levels.



PROGRAM WITH YOUR COMPUTER

Easy Stand Alone 2 is the radical new stand-alone package from Nicolaudie. Available for Windows and Mac OS X, lighting programming has never been more accessible.

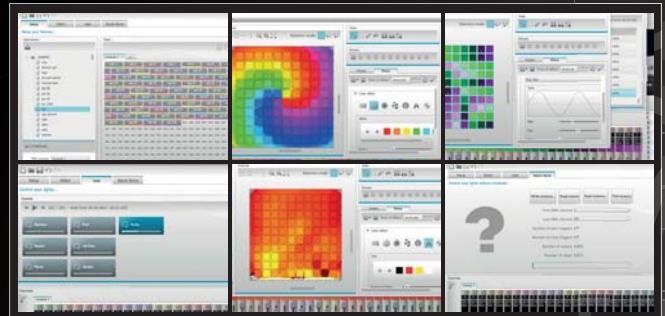
The dynamic software combines simplicity and a feature rich effects generator to make it one of the most definitive lighting control products available. Lighting programming has never been so simple with ESA2.



Drag & drop to add your lights

Build color changing sequences

Advanced vector effects creation



Real time lighting control

Quickly create stunning effects

Play without a computer with 1 click

EASY REMOTE

EASY REMOTE

EASY REMOTE

Take your lighting control to the next level

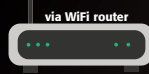
Create an entirely customized remote controller for your tablet or smartphone. Easy Remote is a powerful and intuitive app allowing you to easily add buttons, faders, color wheels and more.

The app can control the ESA2. It's also capable of controlling our Ethernet enabled stand alone controllers.

Connect to a WiFi network and the app will find all compatible devices.



The remote is freely available for iPhone, iPad and Android, and can be used to control the STICK-KE1, STICK-DE3 DMX controllers over a WiFi network.



via WiFi router

RJ45 cable



Create an entirely customized remote controller for your tablet or smartphone. Easy Remote is a powerful and intuitive app allowing you to easily add buttons, faders, color wheels and more.



LIGHTPAD

Intuitive & easy solution

Lightpad allows you to take control of your lights from your smartphone or tablet. The app works over WiFi by connecting to a compatible DMX controller. Lightpad has been designed for all environments including home lighting, office lighting and bar lighting. The remote is freely available for iPhone, iPad and Android, and can be used to control the STICK-KE1 or STICK-DE3 over a WiFi network.

