

# LED POOL LIGHT

## INSTRUCTION OF LED POOL LAMP

This lamps mainly used in swimming pool,or underwater place.Three kinds of functions like Signal color,auto-changing and switch on/off are available for different application.

### A. Specification

#### A-1. Structure

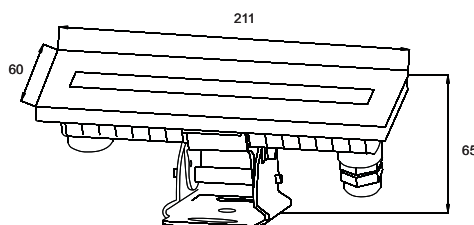
Materials of Shell: 316 stainless steel  
 Input Voltage: 24V DC  
 Protecting Rating: IP68  
 Operating Temperature: -20°C~40°C



#### A-2. Model Configuration Table

| Model No. | LED Color       | LED QTY | PowerConsumption | Input voltage | Size           | Weight | ✓ |
|-----------|-----------------|---------|------------------|---------------|----------------|--------|---|
| LPL-GM3   | R, G, B,WW,W,NW | 6P      | 11.3 WATTS       | 24V AC        | L211xW60xH65mm | 2kg±5% |   |

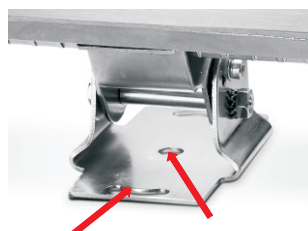
### B. Dimension drawing



LPL-GM3

Unit : mm

### C. Installation



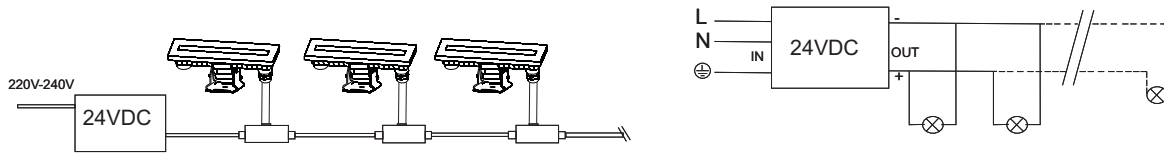
(Two arch fixed holes)

(Middle fixed hole)

- 1 Choose the fixed place well(like cement or strong place)
- 2 Measure the fixed size well according to light;
- 3 Connect the power wire after fixed the light by expansion bolt;
- 4 Remember to make waterproof treatment to connect place(Don' t put the connector in water)

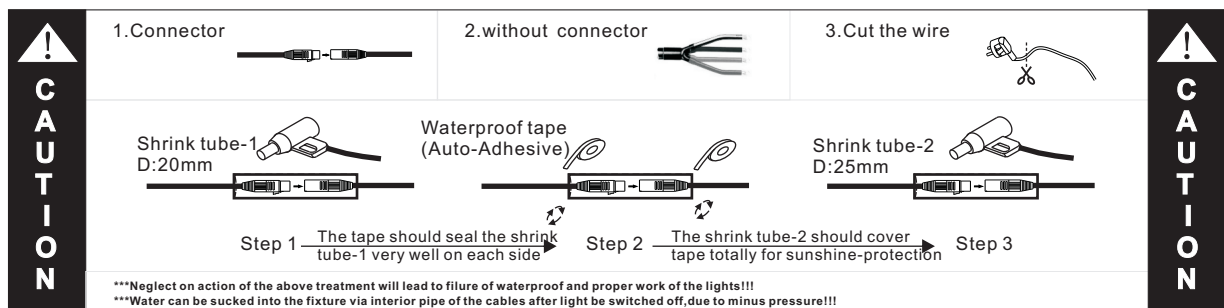
# LED POOL LIGHT

## D. Connection



## E. Waterproof treatment (don't put joint part in water)

The wire joint must be sealed with a 20mm thermal shrinking tube, blow and shrink it with a hair driers; thence wrapped with waterproof tape (auto-adhesive, please refer to below instruction for operation) on both side; Blow the second 25mm shrink tube at last so as to protect waterproof tape under sunshine and guarantee the waterproof validity. For detailed instruction pls refer to below picture:



\*\*\* Power connector should be treated in the same way if available!!!

\*\*\* IP68 connector does not require above treatment, but you connect a threaded twist quite well to prevent operational errors lead to joint water

### Caution:

1. Only professional people to make installation, pls check the fixture well before installation;
2. Pls install the lights according to this datasheet carefully, screw the light well and connect the wire correctly.

### Warning:

- \* neglect on action of the above treatment will lead to failure of waterproof and proper working of the lights!!
- \* Make sure the ground connection well avoid electric shock, due to metal housing.

**Note:** The above instruction are subject to update or improved without notice. Pls turn to our staff for further details !  
Thanks for your long term support !