

Product Description

With a high performance heat sink, exceptional lumen maintenance, and a rock solid housing, the Exite Max will last for many years to come. With a variety of color temperatures and optics, this luminaire can be used in arenas, gymnasiums, airport runways, high mast, shipping ports, or general flood lighting.

> Standard Ship Product - 30 Day Lead Time

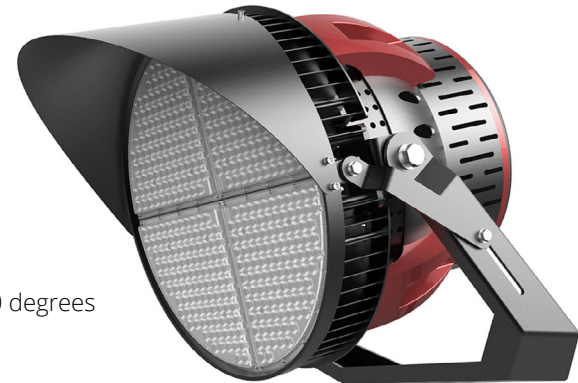
Project:		Type:
Location:		
Prepared By:		Date:
Comments:		

Performance Summary

- Philips Lumileds Luxeon 3030 2D LEDs with high efficacy up to 130 Lm/W
- Integrated dimming by PWM, Resistance, DALI or 1-10V
- National listing lab tested with multiple Type V distributions
- PMMA shatterproof clear lens cover for durability and clarity
- Unique micro optic over each LED reduces glare and enhances uniformity
- Designed for harsh temperature and high humidity
- Solid state with high shock and vibration resistance
- Instant on and off without delay or re-strike
- Industrial cold forged 1070 pure aluminum anodized fixture housing
- Smooth electrophoresis surface treatment finish with stainless hardware
- Excellent resistance to corrosion, UV degradation and abrasion
- Stainless steel hardware to ensure long life
- Heavy duty 240 degree adjustable surface mount yoke bracket
- Horizontal and vertical angle indicators allow mounting adjustment in increments of 10 degrees
- Optional laser guide with bracket for precise aiming is easy to install and remove
- Thermal management by a seamless link of heatsink vents
- Ultra low EMI noise generation eliminates electrical interference
- Integrated 10KV line-to-ground and line-to-line surge protection wired and included
- Field installed aluminum visor included
- 6.5' attached power cord whip and 4' dimming cable for quick and easy installation
- High CRI - RA>80 enhances original colors
- 1/9th micro color binning enables tight color control
- Hot color targeting ensures color is within ANSI bin compliance
- No lead, mercury, UV or IR radiation
- Integrated Meanwell driver features short circuit, over current, over voltage & temp protection
- Operating temperature: -40 to 55 degrees celsius
- IP66 washdown rated for indoor or outdoor applications
- Over 100,000 hour LED life
- Certifications: CE, RoHS, ENEC, SAA, ETL, DLC
- 5 year system warranty

EXITE MAX SERIES

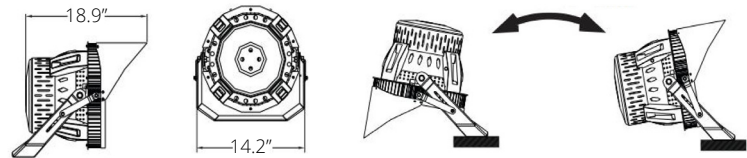
Intense Output For Multiple Applications
LED Dimmable Luminaire



240 DEGREE ROTATION

Models:

- VDSP300W - 300W - 41130 Lm - 33 Lbs - EPA 1.6
- VDSP400W - 400W - 54150 Lm - 35 Lbs - EPA 1.6
- VDSP500W - 500W - 65830 Lm - 35 Lbs - EPA 1.6



Ordering Information:				Part Number:		
*Adder Applies				Ordering Example: VDSP300W-40-T51-UNV1-BK-ND-YK		
Family	CCT	Optic	Voltage	Finish	Dimming	Accessories*
VDSP300W VDSP400W VDSP500W	30 - 3000K 40 - 4000K 50 - 5000K 57 - 5700K 65 - 6500K	T51 - Type V 30 Degree T52 - Type V 45 Degree T53 - Type V 80 Degree	UNV1 - 100-277V UNV2 - 277-480V*	BK - Black/Red CS - Custom*	ND - No Dim D1 - 1-10V Dim PWM - PWM Dim RD - Resistance Dim DL - Dali Dim*	PCE - AC Power Cord Extension with IP65 Connector PG1 - 120V Grounded Plug PG2 - 277V NEMA Twist Lock Plug LG - Integrated Laser Guide For Precise Aiming SC - 10' Safety Cable SF - Slipfitter EB - External Ballast Box For Remote Mounting LVE - Low Voltage Power Cord Extension with IP65 Connector For External Ballast Box (Max 19')



Vivid Leds, Inc.
PO BOX 9
Sellersburg, IN 47172
800-974-3570
www.vividleds.us

Dimensions, specifications, and product pictures are subject to change without notice.

Integrated Laser Guide Accessory



B1

The product on this page is a manufactured to order, non-stocking item. This product cannot be returned for refund or credit.

Revised 12.14.18