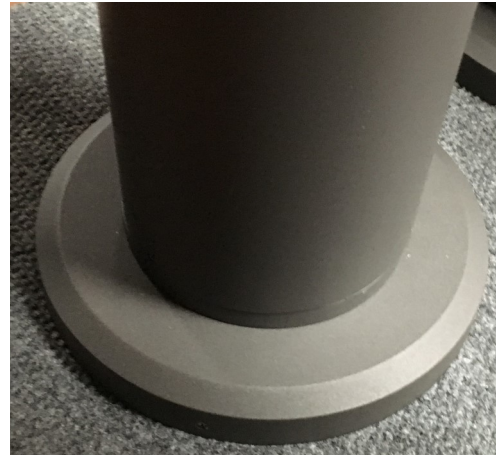
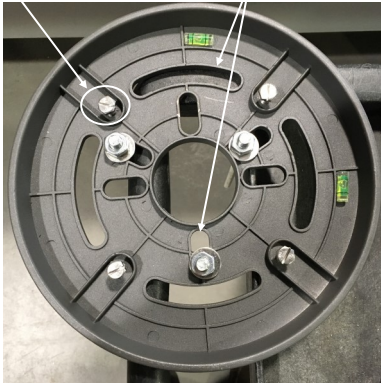


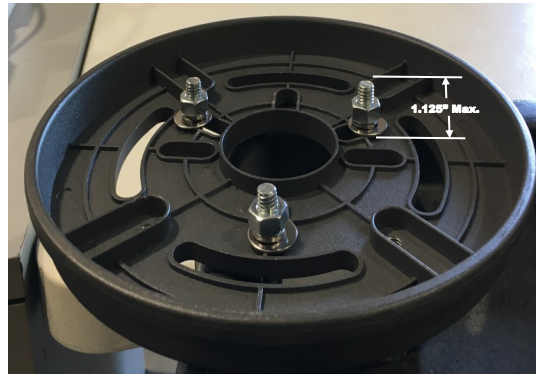
Retrofit Bollard Base



Leveling screws (4) Slots for existing anchor bolts



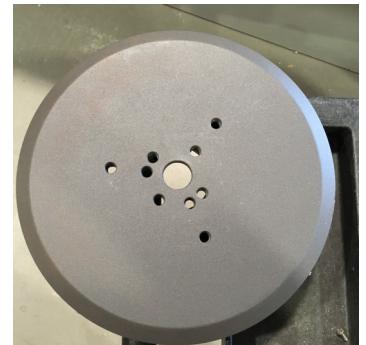
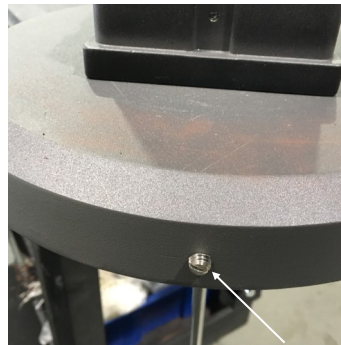
Bottom plate that will sit on existing concrete pad.



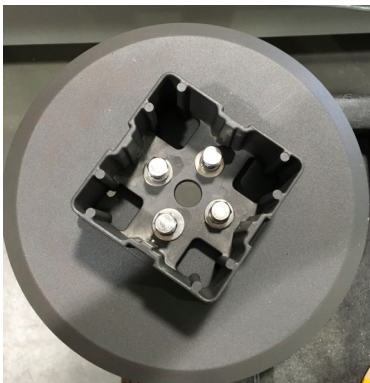
Existing anchor bolts should not be more than 1.125" above plate



Top plate can be rotated to position Bollard. Top plate is secured to bottom plate with set screws (4).



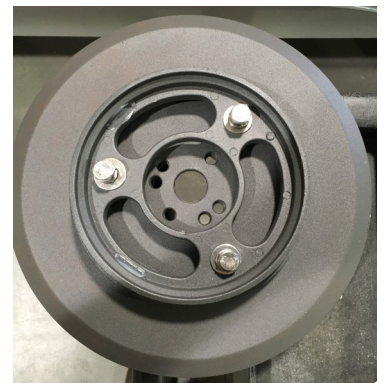
Tapped mounting holes for Bollard mounting plates



Small square Bollard mounting plate



Set screws will be used on exposed holes.



Large round Bollard mounting plate