

Product Description

The Maize series is an exceptional product with a track record of 7 years in the field. We use the latest technology and continue to raise the bar in terms of housing quality, lamp efficacy, and overall extended lifespan. Using only top quality components such as Rubycon capacitors, flame retardant materials, a water resistant cover, and LG LEDs, the Maize series is a market leader for commercial applications.

> Standard Ship - 30 Day Lead Time

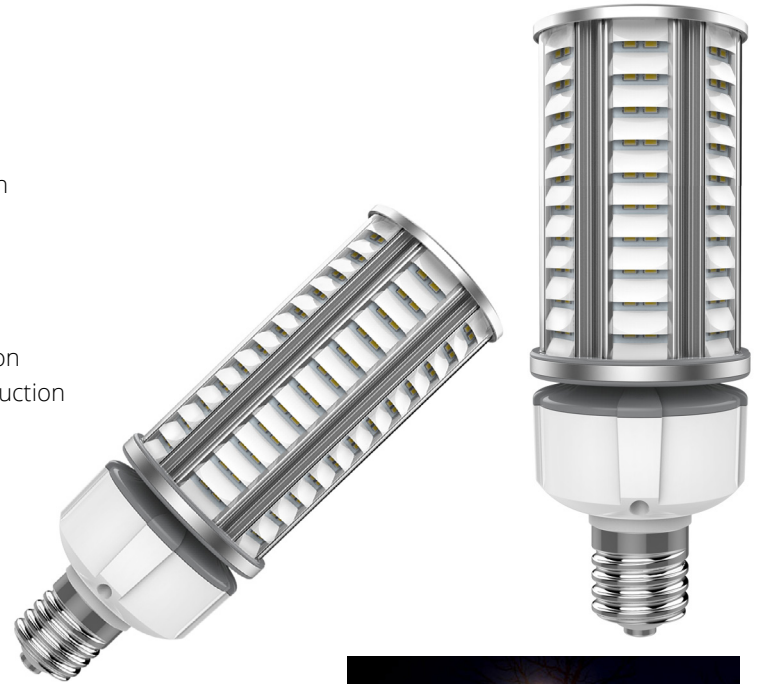
Project:		Type:
Location:		
Prepared By:		Date:
Comments:		

Performance Summary

- LG 5630 SMD LED with high efficacy >110 Lm/W
- National listing lab tested with IES standards
- Optimal design for post top, acorn or ball style fixtures
- Fin style cutoff directs the light down preventing wasted lumens
- Excellent solution for retrofitting HID or incandescent lamps
- IP64 rated for indoor or limited outdoor use
- Internal isolated driver for quick and easy installation
- Aviation grade 6063 aluminum heatsink dissipates heat without a fan
- Suitable for totally enclosed fixtures
- Polycarbonate lens cover provides dust and water protection
- Clear lens for maximum lumen output
- Fin style cutoff cover reduces glare and enhances appearance
- Rubycon capacitance power and 4KV surge built-in for best protection
- Driver and heatsink silicone treated for waterproofing and insect reduction
- Contains no mercury or lead and cool to the touch
- No infrared or UV radiation
- Generates low heat, reducing your HVAC loads
- Flame retardant housing material
- High CRI - RA>80 enhances original colors
- Beam angle: 360 degrees
- Power factor: >.90
- Operating temperature: -40 to 60 degrees celsius
- 100,000 hour LED life
- Certifications: CE, FCC, RoHS, SAA, cUL, UL, DLC
- 1 year system warranty

MAIZE DARK SKY SERIES

HID Retrofit LED Lamp



Models:

- WDS2827: 84 LEDs - 27W - 2900 Lm - 8.1" (L) x 3.4" (D)
- WDS2836: 96 LEDs - 36W - 3900 Lm - 8.5" (L) x 3.4" (D)
- WDS2845: 120 LEDs - 45W - 4900 Lm - 9.6" (L) x 3.4" (D)
- WDS2854: 144 LEDs - 54W - 5900 Lm - 10.6" (L) x 3.4" (D)

Ordering Information:

Part Number:

*DLC not available for all CCT. Please inquire.

Ordering Example: WDS2827-30-T5-UNV-E26

Family	CCT*	Optic	Voltage	Base Type		
WDS2827	30 - 3000K	T5 - Type V 180 Degree	UNV - 100-277V	E39 - Mogul		
WDS2836	40 - 4000K			EX39 - Mogul		
WDS2845	50 - 5000K					
WDS2854	57 - 5700K					



Vivid Leds, Inc.
PO BOX 9
Sellersburg, IN 47172
800-974-3570
www.vividleds.us

Dimensions, specifications, and product pictures are subject to change without notice.

Cautions:

Remove ballast before installing
Check dimensions of lamp for fitment

H5