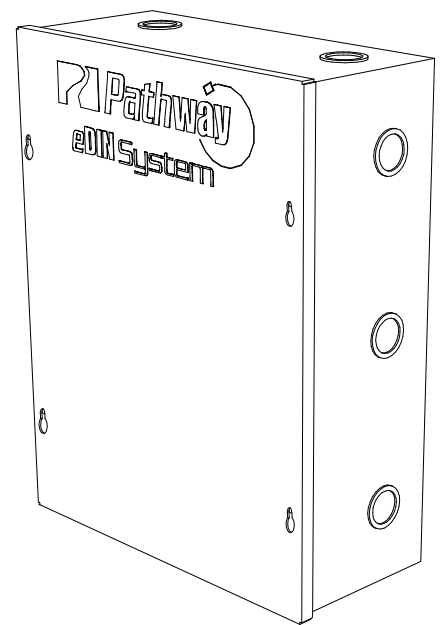
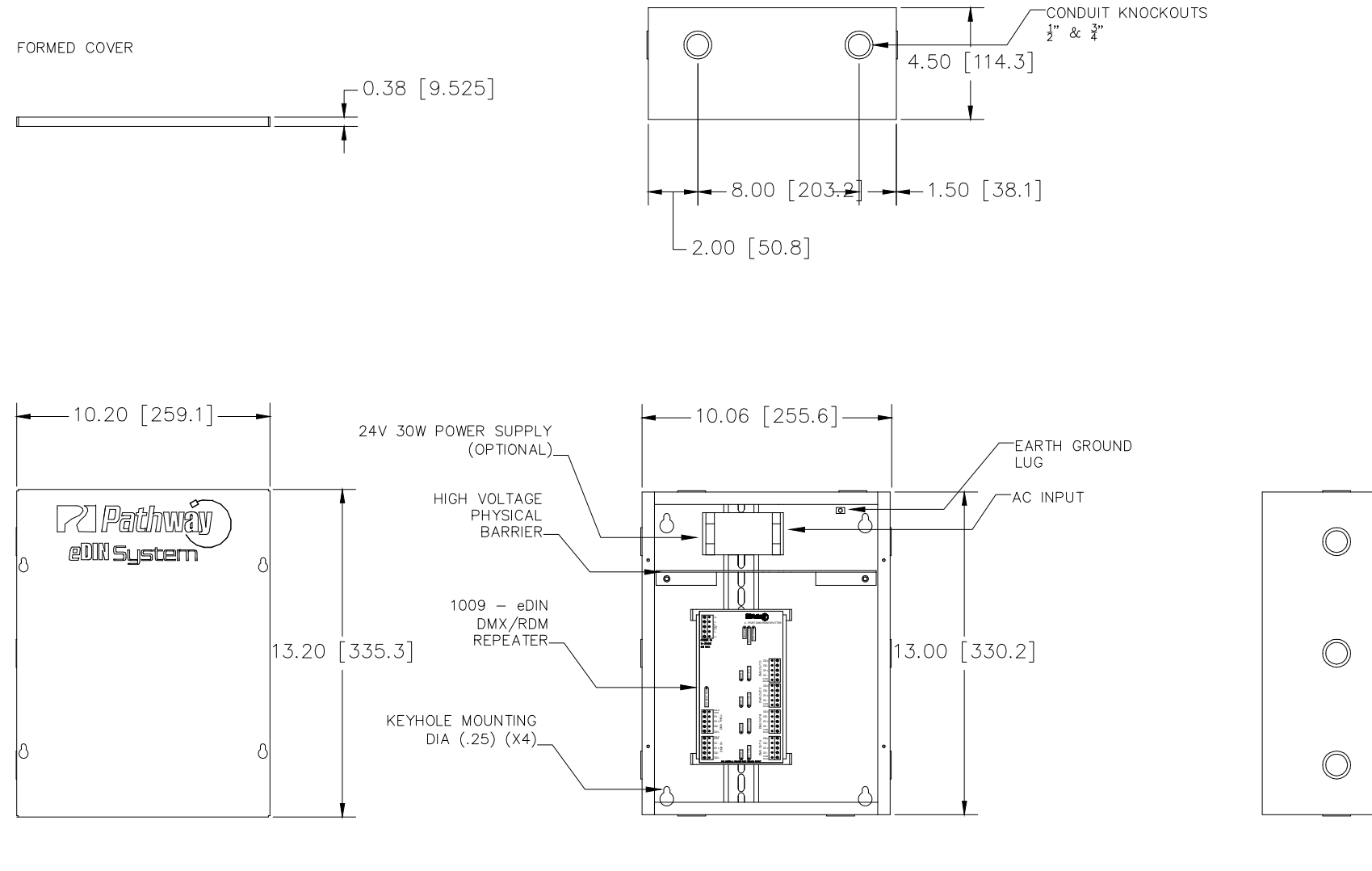


SPECIFICATIONS

SURFACE MOUNT ENCLOSURE  
 MATERIAL – 18 GA. COLD ROLLED STEEL  
 FINISH – MATTE BLACK POWDER COAT  
 35mm x 7.5mm DIN RAIL MOUNTING

10.25"x13.25"x.38" FORMED COVER (included)



4813 - 4 way eDIN DMX/RDM Installation Splitter

FILENAME: 481x eDIN DMX-RDM Splitters.DWG

PART NUMBER: 4813



**Pathway Connectivity Inc.**  
 103 Inglewood Plaza, 1439 17th Avenue SE  
 Calgary, Alberta, Canada T2G 1J9  
 Phone: +1(403)243-8110 Fax: +1(403)287-1281  
<http://www.pathwayconnect.com>

DRAWN BY: BRIAN F. EVANS  
 DATE: 5/18/2017  
 CHECKED: ROBERT BELL  
 SCALE: NTS  
 UNITS: INCHES [mm]

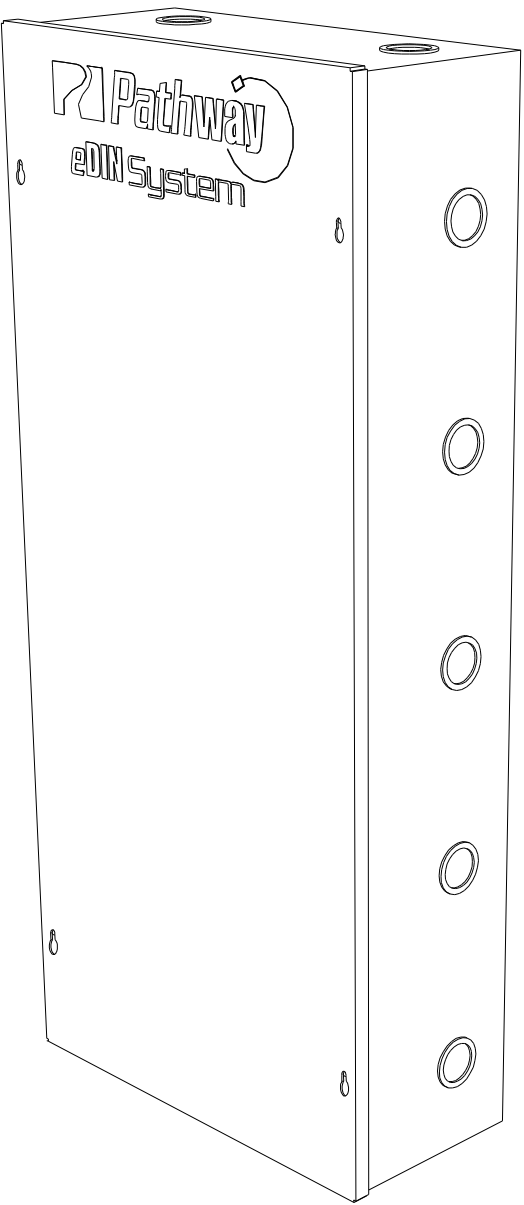
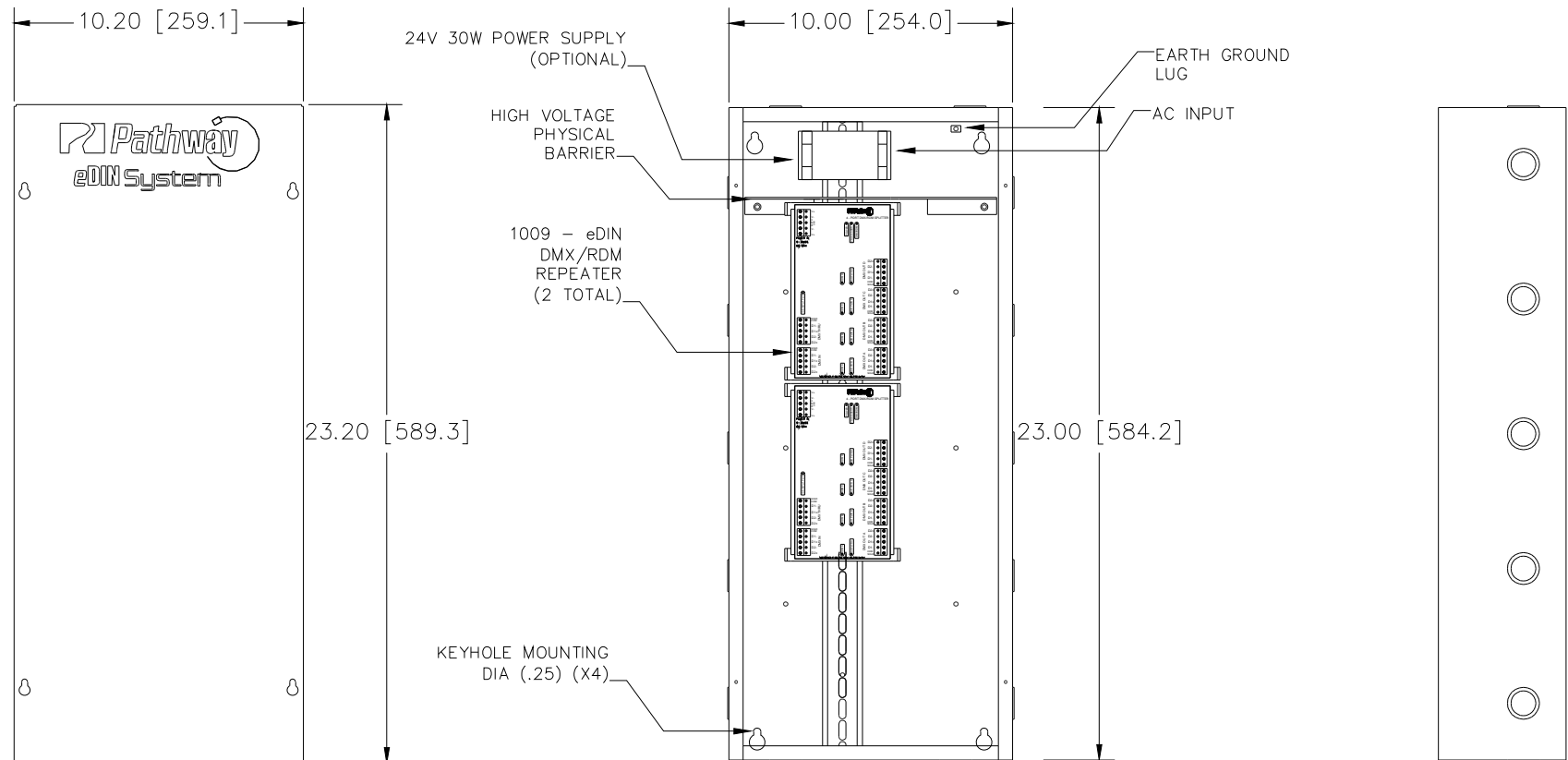
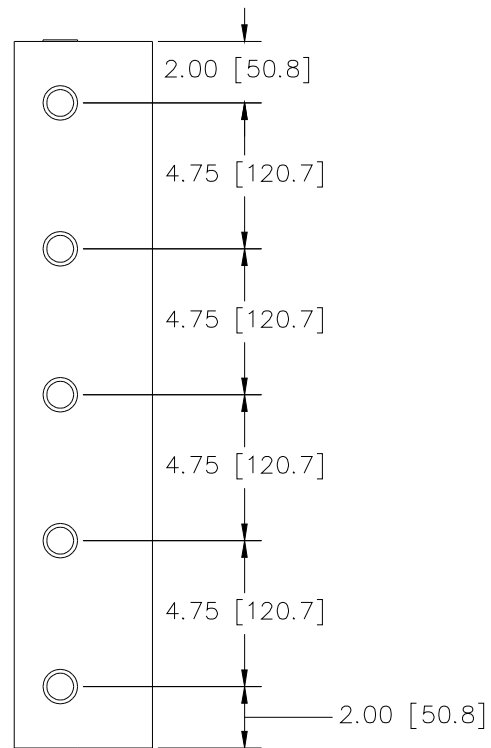
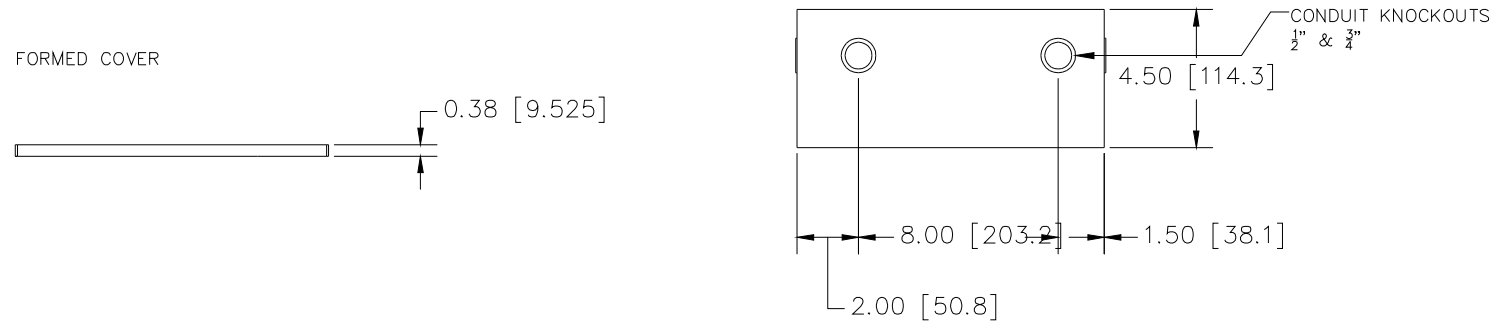
REV

**A**

SPECIFICATIONS

SURFACE MOUNT ENCLOSURE  
 MATERIAL – 18 GA. COLD ROLLED STEEL  
 FINISH – MATTE BLACK POWDER COAT  
 35mm x 7.5mm DIN RAIL MOUNTING

10.25"x23.25"x.38" FORMED COVER (included)



4814 - 8 way eDIN DMX/RDM Installation Splitter

FILENAME: 481x eDIN DMX-RDM Splitters.DWG

PART NUMBER: 4814



**Pathway Connectivity Inc.**

103 Inglewood Plaza, 1439 17th Avenue SE  
 Calgary, Alberta, Canada T2G 1J9  
 Phone: +1(403)243-8110 Fax: +1(403)287-1281  
<http://www.pathwayconnect.com>

DRAWN BY: BRIAN F. EVANS

DATE: 5/18/2017

CHECKED: ROBERT BELL

SCALE: NTS

UNITS: INCHES [mm]

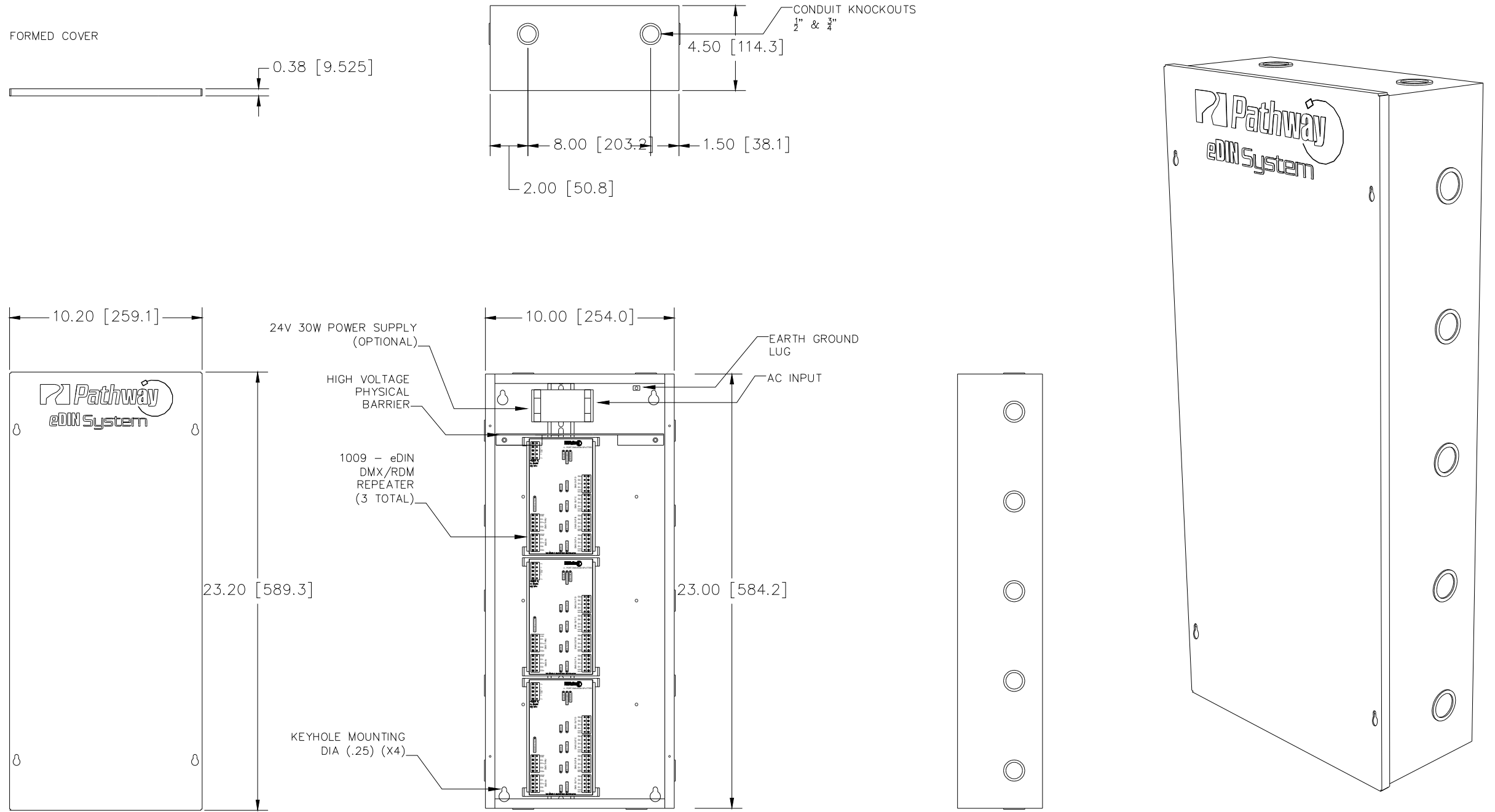
REV

**A**

SPECIFICATIONS

SURFACE MOUNT ENCLOSURE  
 MATERIAL – 18 GA. COLD ROLLED STEEL  
 FINISH – MATTE BLACK POWDER COAT  
 35mm x 7.5mm DIN RAIL MOUNTING

10.25"x23.25"x.38" FORMED COVER (included)



4815 - 12 way eDIN DMX/RDM Installation Splitter

FILENAME: 481x eDIN DMX-RDM Splitters.DWG

PART NUMBER: 4815



**Pathway Connectivity Inc.**

103 Inglewood Plaza, 1439 17th Avenue SE  
 Calgary, Alberta, Canada T2G 1J9  
 Phone: +1(403)243-8110 Fax: +1(403)287-1281  
<http://www.pathwayconnect.com>

DRAWN BY: BRIAN F. EVANS

DATE: 5/18/2017

CHECKED: ROBERT BELL

SCALE: NTS

UNITS: INCHES [mm]

REV

**A**