

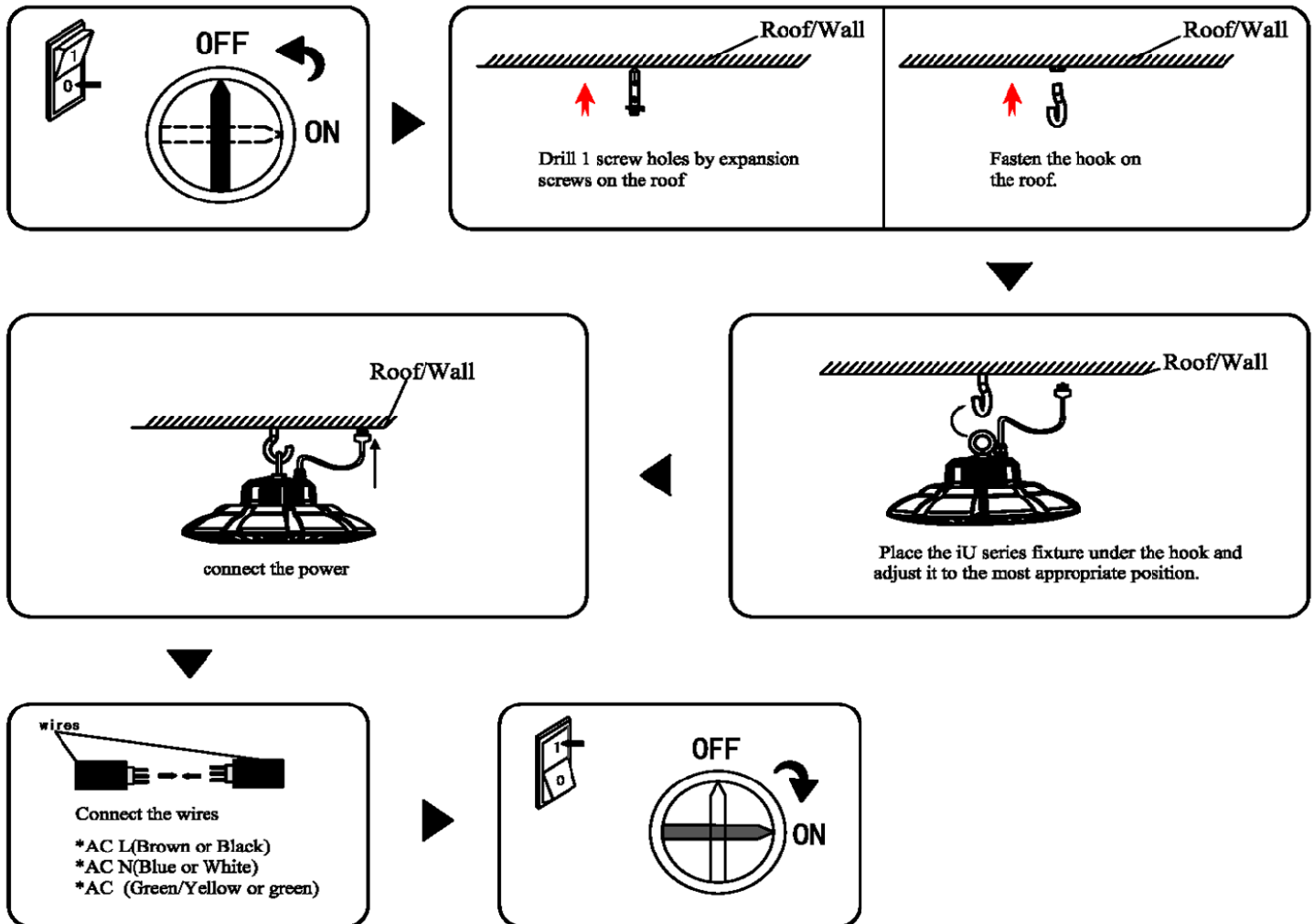
DECORA BASIC INSTALLATION

Check whether it concerns an AC(Alternating Current)based or DC(Direct Current) based system

⚠ Caution:

Switch Off the Power Supply

New Installation



1. To protect the surface of the fixture from scratch, please handle the package with care during the transportation and storage. Do not place heavy item above the package;
2. Do not let the product surface friction with other hard objects or fall on the floor;
3. Make sure the fixture is securely mounted. The connection of all the wires must have insulation protection;
4. The appropriate waterproof measurements are required when connecting the driver externally;
5. The operating voltage range of this product is between 90 VAC to 305 VAC (in 50/60Hz). Please do not use the luminaire out of this range.