

Product Description

The Multi GI HP series is a ARRA compliant multi-application luminaire using the latest Samsung LEDs. It is available with a wide choice of optical distributions designed to replace up to 1500w HID. Typical applications include auto dealerships, retail centers, industrial parks, schools, public transit and airports, office buildings and medical facilities. Mounting heights of 20 to 50 feet can meet requirements.

> Quick Ship - In Stock, Ready to Ship

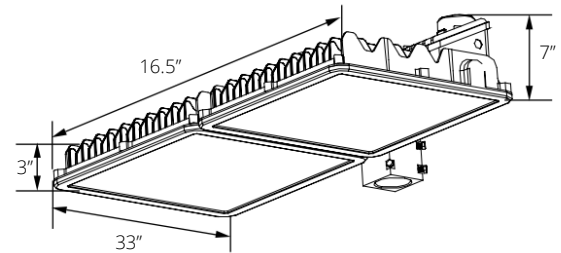
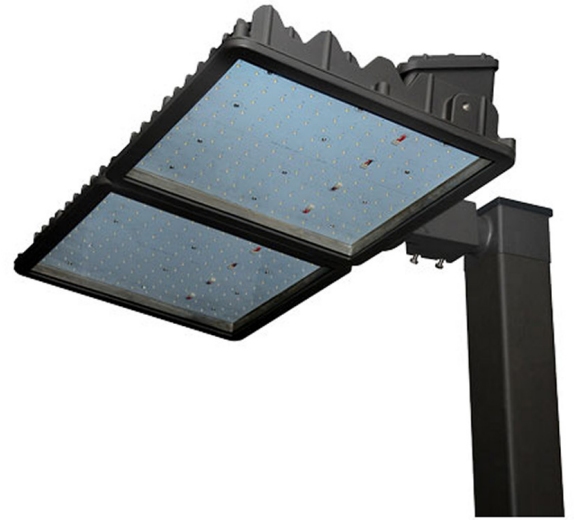
| | | |
|--------------|--|-------|
| Project: | | Type: |
| Location: | | |
| Prepared By: | | Date: |
| Comments: | | |

Performance Summary

- Samsung LH351Z LEDs with high efficacy >130 Lm/W
- USA assembled product with quick warranty support
- Patented heat dissipation design for optimum efficiency
- National listing lab tested to IES standards
- High lumen maintenance exceeds DOE requirements
- Photometric optic built over each LED for enhanced light distribution
- Solid State with high-shock and vibration resistance
- Aluminum LED boards with copper tracings for best thermal management
- LED array manufactured using a state-of-the-art SMT machine
- Clear tempered flat glass or clear prismatic lens for reduced hot spots
- A360 extruded ingot die-cast housing, front frame and ballast box
- DuPont textured architectural bronze powdercoat finish
- Aluminum or steel poles available to match fixture and slipfitter
- Chromate conversion coating for long lasting appearance
- Mounts with factory installed adjustable slipfitter
- Rust resistant stainless steel hardware with durable nickel-plating
- Hinged frame and latch for tool-less entry
- High CRI - RA>79 enhances original colors
- Includes 7-pin twist lock receptacle for optional photocell or shorting cap
- 1-10V dimmable driver with surge protection
- Fast turn on with no warm up or cold start issues
- Contains no mercury, lead, infrared or UV radiation and cool to the touch
- Operating temperature: -40 to 50 degrees celsius
- Samsung TZ chip platform with completed 6,000 hour LM-80 test
- 419,000 hour LED life @ L70 tested at 25 degrees celsius
- Certifications: CE, RoHS, CSA, DLC - IP66 sealed LED compartment
- 5 year system warranty

MULTI GI HP SERIES

High Powered Flood, Area, and Site Lighting
LED Dimmable Luminaire



Models:

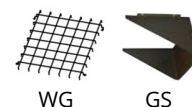
- VVDAL55AFR: 525W - 69001Lm - EPA .96 - Weight: 62 Lbs

| Ordering Information: | | | Part Number: | Ordering Example: VVDAL55AFR-50-S5C-V27-SPA | |
|-----------------------|--|--|-----------------------------------|---|--|
| *Adder Applies | | **Adder Applies. Extended Lead Time May Apply. | | | |
| Family | CCT | Optic | Voltage | Mounting | Accessories* |
| VVDAL55AFR | 30 - 3000K** 40 - 4000K** 50 - 5000K | S5C - Type V Short, B4-U0-G2, Clear Lens S5P - Type V Short, B4-U0-G2, Prismatic Lens* S4S - Type IV Short, B3-U0-G4, Clear Lens* S3S - Type III Short, B3-U0-G3, Clear Lens* S2S - Type II Short, B3-U0-G3, Clear Lens* S1S - Type I, B4-U0-G3, Clear Lens* S5AP - NEMA 7H x 5V, 130°H x 75°V, Prismatic* S5AC - NEMA 7H x 5V, 130°H x 75°V, Clear S5BP - NEMA 7H x 6V, 115°H x 40°V, Prismatic* S5BC - NEMA 7H x 6V, 115°H x 40°V, Clear S5CP - NEMA 7H x 7V, 115°H x 70°V, Prismatic* S5CC - NEMA 7H x 7V, 115°H x 70°V, Clear S5DP - NEMA 7H x 6V, 120°H x 50°V, Prismatic* S5DC - NEMA 7H x 6V, 120°H x 50°V, Clear S5FP - NEMA 7H x 7V, 120°H x 120°V, Prismatic* S5FC - NEMA 7H x 7V, 120°H x 120°V, Clear | V27 - 120-277V V48 - 347/480V* | SPA - Slipfitter | SF - Single Fuse DF - Double Fuse SP1 - 20kA Surge Protection 120-277VAC SP2 - 20kA Surge Protection 347-480VAC WG - Stainless Steel Wire Guard, Includes Hardware GS - Aluminum House Side Glare Shield PCA - 7-Pin Twist Lock Photocell Receptacle PCB - 3-Pin Twist Lock Photocell Receptacle PC1 - 105-287VAC Instant Twist Lock Photocell PC2 - 120VAC Time Delay Twist Lock Photocell PC3 - 277VAC Time Delay Twist Lock Photocell PC5 - Twist Lock Non-Shorting (Fixture Always off) PC6 - Twist Lock Shorting Cap (Fixture Always on) CS - Custom Housing Color |



Vivid Leds, Inc.
PO BOX 9
Sellersburg, IN 47172
800-974-3570
www.vividleds.us

Dimensions, specifications, and product pictures are subject to change without notice.



A9