

Product Description

With a high performance heat sink, exceptional lumen maintenance, and a rock solid housing, the Exite ARFL flood and area light will last for many years to come. With lumen packages ranging in comparison from 400W to 1000W HID, a variety of color temperatures and optics, this luminaire can be used in many different applications.

> Standard Ship Product - 30 Day Lead Time

Project:		Type:
Location:		
Prepared By:		Date:
Comments:		

Performance Summary

- Philips Lumileds Luxeon 3030 2D LEDs with high efficacy up to 120 Lm/W
- Integrated dimming by PWM, Resistance or 1-10V with 1' attached cable whip
- National listing lab tested with multiple distributions
- Integrated Meanwell power supply - field replaceable
- PMMA clear lens for durability and clarity with optic over each LED
- Designed for harsh temperature and high humidity
- Solid state with high shock and vibration resistance
- Instant on and off without delay or re-strike
- Industrial cold forged 1070 pure aluminum anodized fixture housing
- Smooth electrophoresis surface treatment finish with stainless hardware
- Excellent resistance to corrosion, UV degradation and abrasion
- Choice of mounting to poles or walls with trunnion, slipfitter and arm options
- Includes integrated gasketed NEMA twistlock receptacle
- Integrated 10KV line-to-ground surge protection wired and included
- Differential line-to-line 10KV surge protection wired and included
- 3 foot attached power cord whip for quick and easy installation
- High CRI - RA>80 enhances original colors
- 1/9th micro color binning enables tight color control
- Hot color targeting ensures color is within ANSI bin compliance
- No lead, mercury, UV or IR radiation
- Short circuit, over current, over voltage, over temp protection
- Operating temperature: -30 to 50 degrees celsius
- IP65 washdown rated for indoor or outdoor applications
- Over 100,000 hour LED life
- Certifications: CE, RoHS, RCM, FCC, TUV, CB, IK10, cUL, UL, DLC
- 5 year system warranty

EXITE ARFL SERIES

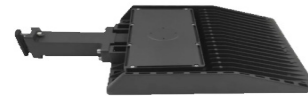
Affordable Solution with Multiple Mounting Options
Low Profile LED Dimmable Luminaire



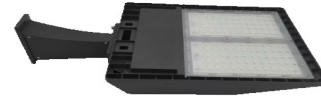
TR - 180 Degree Adjustable Trunnion



SF - 180 Degree Adjustable Slipfitter



PD - Extruded Arm for Round or Square Pole



EA - Mount for Wall or Square Pole

Models:

- VVDPL10 - 100W - 13752 Lm - 15.2" (L) x 13.4" (W) x 3" (H) - 11.4 Lbs - EPA 0.43
- VVDPL15 - 150W - 19198 Lm - 15.2" (L) x 13.4" (W) x 3" (H) - 12.6 Lbs - EPA 0.43
- VVDPL20 - 200W - 24590 Lm - 15.2" (L) x 13.4" (W) x 3" (H) - 12.6 Lbs - EPA 0.43
- VVDPL24 - 240W - 30228 Lm - 15.2" (L) x 13.4" (W) x 3" (H) - 12.6 Lbs - EPA 0.43
- VVDPL30 - 300W - 38423 Lm - 15.2" (L) x 13.4" (W) x 4.3" (H) - 15.3 Lbs - EPA 0.45

Ordering Information:				Part Number:			
*Adder Applies				Ordering Example: VVDPL10-50-T2M-UNV-BZ-ND-TR			
Family	CCT	Optic	Voltage	Finish	Dimming	Mounting	Accessories*
VVDPL10	30 - 3000K	T2M - Type II Medium 60x150	UNV1 - 100-277V	BZ - Bronze	ND - No Dim	TR - Trunnion	PC - NEMA Photocell
VVDPL15	40 - 4000K	T3M - Type III Medium 70x150	UNV2 - 347-480V*	BK - Black	D1 - 1-10V	SF - Slipfitter	SC - Shorting Cap
VVDPL20	50 - 5000K	T4M - Type IV Medium 90x150		WT - White	PWM - PWM	PD1 - Extruded Arm Square	MS - Motion Sensor
VVDPL24	57 - 5700K	T5M - Type V Medium 120x120		CS - Custom*	RD - Resistance	PD2 - Extruded Arm Round	Up to 25' with 120 Degree Motion Range
VVDPL30	65 - 6500K	T5S - Type V Short 40x40				EA - Wall or Pole	PC6 - 6.5' Power Cord Extension with IP65 Connector (Field Installed)
						See mounting dimensions & details on the website	PG - US Grounded Plug



Vivid Leds, Inc.
 PO BOX 9
 Sellersburg, IN 47172
 800-974-3570
 www.vividleds.us

Dimensions, specifications, and product pictures are subject to change without notice.

The product on this page is a manufactured to order, non-stocking item. This product cannot be returned for refund or credit.



MS - Motion Sensor



PC - Photocell

A5

Revised 4.11.18